



GREATER  
PETERBOROUGH  
**UTC** PROSPECTUS  
2018 - 2019



## CONTENTS

WELCOME	3
WHY CHOOSE THE UTC?	4
WHY ENGINEERING AND THE BUILT ENVIRONMENT?	5
OUR SPONSORS	6
UTC PATHWAYS	8
YOUR CURRICULUM AT GPUTC	9
KEY STAGE 4 PROGRAMME (YEAR 10 + 11)	10
KEY STAGE 5 PROGRAMME (YEAR 12 + 13)	11
LIFE AT GPUTC	12
SUPPORT & GUIDANCE	13
UTC SNAPSHOTS	14
HOW TO APPLY	15
STUDENT CASE STUDIES	16
TRAVEL	18
FACILITIES	19
FINANCES	19
STUDENT SUPPORT	19
VISIT GPUTC	20
APPLICATION FORM 2018-19	21
FAQs	23

## WELCOME

### Join Us - and help to build the future.

The Greater Peterborough University Technical College (GPUTC) offers an outstanding technical education that will give you the skills and hands on experience employers want.

Working with their head and hands, our students get the training they need to become the sustainable engineers, builders, designers and architects of the future.

## WE OFFER

### State-of-the-art facilities

Our £12 million, sustainable purpose-built school is equipped with state-of-the-art facilities and equipment.

Our small classes mean more one-to-one tuition in a high tech working environment.

We offer real-life work experience to put what you learn into practice.

### A new approach

Major employers sponsor us and our students. They need high calibre people with the skills we teach.

This fresh approach means real employers are directly involved in your education, setting projects that will see you learning by doing – completing challenging projects and testing them in the real world.

### New opportunities

We want to make sure every student graduates to a job, apprenticeship or to further study at college or university. We are so confident in what we have to offer that we guarantee all our student graduates job interviews with our Employer Sponsors.

GPUTC student graduates will have both academic and technical qualifications in one of our two specialisms – Engineering OR the Built Environment.

If you want to be one of the people shaping the future, fill in the application form at the back of this prospectus, or come along to one of our open days or events.

Read on to learn more about our offer, our culture and ethos.



## WHY CHOOSE THE UTC?

Funded by the government and supported by large employers, UTCs are a new alternative to traditional schools for 14 – 19 year olds. They teach technical and scientific subjects to the inventors, engineers, scientists and technicians of tomorrow.

Peterborough is working towards being the 'UK's Environment Capital' and a national centre for sustainability. To make that a reality, its employers need people with the skills and experience a UTC offers.

GPUTC is investing in the area's young people, giving them the technical know-how and practical work experience they need to succeed.

Students at GPUTC have the opportunity to learn with their head and their hands, plus the added bonus of getting to work with state-of-the-art equipment and a range of talented employer sponsors.

## WHY ENGINEERING AND THE BUILT ENVIRONMENT?

Engineers build the roads and bridges, the cars and aeroplanes, robots and satellites that make modern life possible. A career in engineering could take you anywhere in the world.

At GPUTC we are specialising in automation and systems control. The curriculum will span a wide range of engineering disciplines, with modules including:

- Automation control and robotics
- Engineering and the environment
- Principles of electrical and electronic engineering
- Principles of mechanical engineering

Studying the Built Environment will give you an insight into the worlds of architecture, building, surveying and design to name just a few.

The sector will continue to grow as society looks for ever more sustainable engineering methods, be it through the use of renewable energy, re-using waste in construction or technologies like rainwater harvesting.

At GPUTC the Built Environment course includes modules on:

- Architectural design and planning
- Graphical communication
- Sustainability and new technologies
- Industrial and commercial construction technology

By combining GCSEs or A Levels with technical qualifications and strong employability skills, Built Environment and Engineering graduates from GPUTC will stand out as the first choice for jobs, apprenticeships and higher education.

Job Role	Average Earnings 2016
Engineering Professional	£37,551
Architect	£33,054
Engineering Technician	£30,316
Design and Development Engineer	£35,129
Construction Project Manager	£31,950
Quantity Surveyor	£31,612
Environment Professional	£28,426
Computer Software Engineer	£36,603
Development of Building Projects	£38,017
Mechanical Engineer	£37,313

## OUR SPONSORS

UTC's are unique in that they have sponsors and partners which play a large part in the way that students learn at GPUTC. Sponsors and Partners have a role in shaping the curriculum for our specialisms. In addition to this they can offer work experience, industry exposure and a guaranteed job interview upon completion of study.

### GPUTC's Sponsors and Partners



Anglian Water



Larkfleet Group



Peterborough Regional College



Anglia Ruskin University



The Royal Navy



Perkins Engines Company Limited



Z-Tech



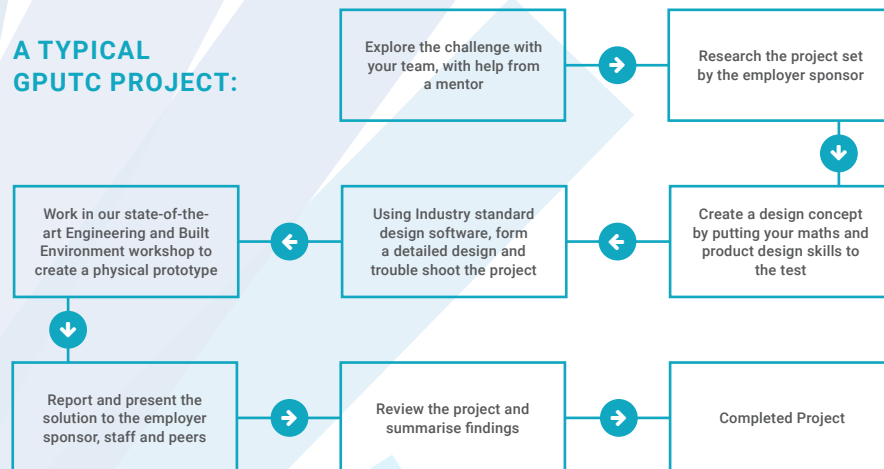
Kier



Marshall Aerospace

Sponsors and partners are committed to supporting our curriculum and to helping our students learn the skills and qualifications employers are after. This is done by working with the UTC and its staff to contextualise the teaching and learning with regard to industry workplace practices and by setting real-world challenges for students to undertake as their assessment.

### A TYPICAL GPUTC PROJECT:



## EMPLOYER PROJECTS OUR STUDENTS HAVE ALREADY UNDERTAKEN:

### Valves employer project with Anglian Water

Students work in conjunction with Anglian Water to complete a product disassembly on various sizes of Non-Return-Valves to aid their understanding of material properties and manufacturing techniques. An essential element of this employer project is students carrying out product analysis and producing sophisticated design prototypes. Anglian Water provided students a range of large cast iron valves for disassembly - the same valves they would have seen on the trips to the Anglian Water Treatment Works sites at Grafham Water and Wing.

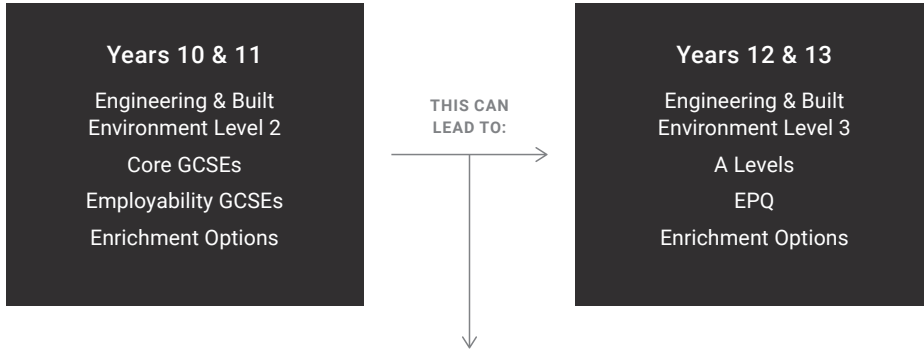
### The Croft at Bourne employer project with Larkfleet Homes

The challenge for students was to renovate and refit an existing property to current Building Regulations, by providing communal facilities and a residential flat to an old people's home. Students were asked to provide an annotated drawing and sketch to show they would refurbish the existing dwelling to meet the brief. In addition to this students also had to demonstrate an understanding of the retrofit elements used and also outline the cost implications of a new redesigned property.



# UTC PATHWAYS

Students start their journey at the UTC in Year 10 or Year 12. If going to University to study a degree, start an apprenticeship or hit the ground running with a job is in your future, we can help you to achieve your goals. Your mentor and the Student Support team will support you in guiding you to your chosen destination.

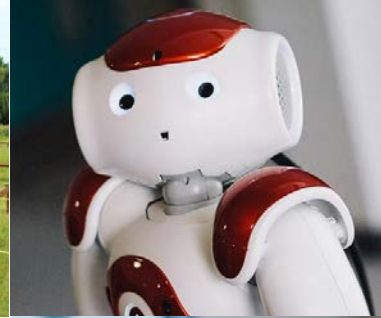


## YOUR CURRICULUM AT GPUTC

What you learn at GPUTC depends on which of our specialisms you choose – Engineering or the Built Environment.

There will be a broad range of teaching and learning activities, including lectures, master classes, briefings and seminars to introduce new topics and launch projects.

We are firm believers in learning by doing and the Employer Projects are a key feature of our curriculum. Our employer sponsors will set exciting and challenging technical projects that will inspire you to develop your skills and give you the chance to test them out in a real-life context.



### Apprenticeships

- Apprenticeship in Engineering Manufacture
- Advanced Apprentice Surveyor
- Engineering Design Apprentice
- Apprentice Mechanical Engineer
- Apprentice Quantity Surveyor
- Apprentice in Software Development

### University

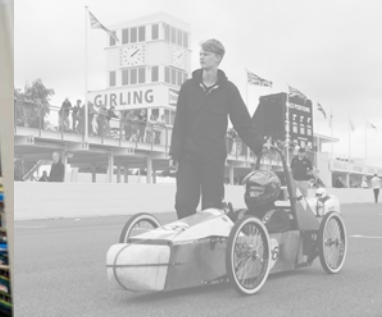
- Mechanical Engineering MEng (Hon)
- Architecture BA (Hons)
- Software Engineering BSc (Hons)
- Design Engineering BEng (Hon)
- Engineering Design and Manufacture BSc (Hons)
- Construction Engineering Management BSc (Hons)

### Career

- Architect
- Civil Design Engineer
- Project Engineer
- Service Support Engineer
- Assistant Quantity Surveyor
- Junior Mechanical Design Engineer

### Further Education

After studying at GPUTC students can go onto further study at our sponsor College Peterborough Regional College



## KEY STAGE 4 PROGRAMME (YEAR 10 + 11)

In Year 10/11 you will follow a broad programme that will allow you to gain a valuable qualification in Engineering.

### YOU WILL STUDY THE FOLLOWING MANDATORY GCSE SUBJECTS:

- |  |  |
|--|--|
| <input checked="" type="checkbox"/> English Literature | <input checked="" type="checkbox"/> Maths  |
| <input checked="" type="checkbox"/> English Language   | <input checked="" type="checkbox"/> Science<br>(either Double Award or Triple Science) |

### PLUS TWO OF THE FOLLOWING OPTIONAL GCSE SUBJECTS

- |   |   |   |
|---|---|---|
| <input type="checkbox"/> Business Studies | <input type="checkbox"/> Art and Design | <input type="checkbox"/> Support Programme to Improve Maths and English |
| <input type="checkbox"/> Product Design   | <input type="checkbox"/> Sports Science |   |
| <input type="checkbox"/> Computer Science | <input type="checkbox"/> Geography      |   |

In Year 11 you can choose to carry on with Engineering or specialise in the Built Environment whilst carrying on studying for your GCSEs.

**Sustainable Engineering**  
(OCR Level 1 or 2 Award)

**Sustainable Built Environment**  
(WJEC Level 1 or 2 Award)

## KEY STAGE 5 PROGRAMME (YEAR 12 + 13)

Students have the option of specialising in Engineering or the Built Environment and pick a further one or two A Levels to supplement their study. Individual paths can be tailored to your needs and you will get a chance to discuss this at your interview.

**Engineering**  
(equivalent to 1.5 or 2 A Levels)

**Built Environment**  
(equivalent to 1.5 or 2 A Levels)

### PLUS ONE OR TWO A LEVEL OPTIONS

- |                                       |                                    |   |
|---------------------------------------|------------------------------------|---|
| <input type="checkbox"/> Mathematics  | <input type="checkbox"/> Geography | <input type="checkbox"/> Product Design   |
| <input type="checkbox"/> Physics      | <input type="checkbox"/> Biology   | <input type="checkbox"/> Business Studies |
| <input type="checkbox"/> Art & Design | <input type="checkbox"/> Chemistry | <input type="checkbox"/> Computer Science |

Students can choose to add Further Maths as an extra A Level (Minimum Grade 7 at GCSE Maths)

Students can choose to add EPQ: Extended Project Qualification (equivalent to 0.5 of an A Level in terms of UCAS Points)

The curriculum will also include Qualifications Plus for all students which is made up of:

- Information, advice and guidance (including careers and progression)
- Philosophy and Ethics
- Sport
- Personal Social Health Education (PSHE)
- Enrichment programmes

# LIFE AT GPUTC

Life at GPUTC starts at 9am when students launch straight into the day's lessons. Each day is different and includes time in the workshop, design studios, labs or classrooms. Our students, who will go onto become the engineers, builders, designers and architects of the future treat every day like a job interview and ensure that they dress the part too.

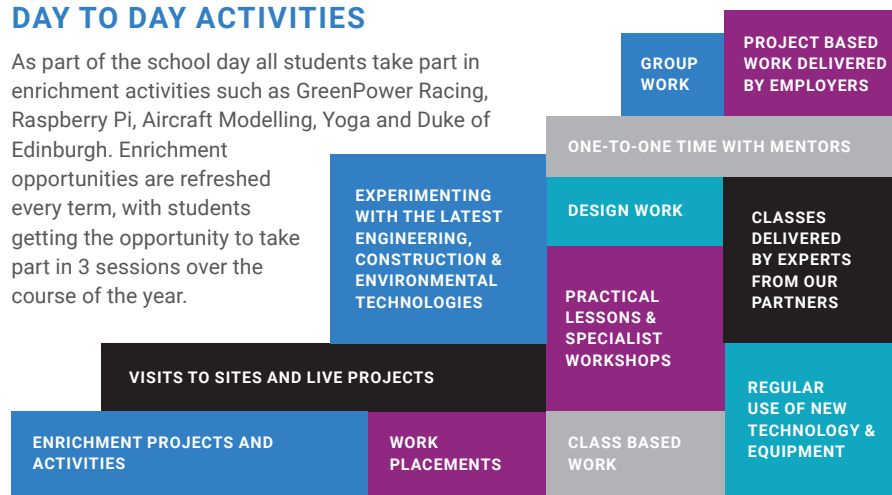
The building will be open to students from 8.00am – 5.00pm. Students will start the school day at 8.45am and finish at 4.45pm Monday to Thursday and at 4.30pm on Friday. The longer school day at GPUTC allows for students to make a head start on assignments on site.

## Example Timetable in Year 10

	MON	TUE	WED	THU	FRI
<b>PERIOD 1</b> 9.00AM	9.00AM - 9.15AM MENTORING	9.15AM - 9.50AM PSHE	ART	ENGINEERING	MATHS
<b>PERIOD 2</b> 9.50AM	MATHS	ART	ENGINEERING	MATHS	COMP. SCIENCE
10.40AM - 11.00AM	BREAK				
<b>PERIOD 3</b> 11.00AM	BIOLOGY	ENGLISH	ENGLISH	MATHS	COMP. SCIENCE
<b>PERIOD 4</b> 11.50AM	BIOLOGY	ENGLISH	ENGLISH	MATHS	COMP. SCIENCE
12.40PM - 1.20PM	LUNCH				
<b>PERIOD 5</b> 1.20PM	PHYS. ED	CHEMISTRY	ART	CHEMISTRY	ENGINEERING
<b>PERIOD 6</b> 2.10PM	PHYS. ED	BIOLOGY	ART	CHEMISTRY	ENGINEERING
3.00PM - 3.15PM	BREAK				
<b>PERIOD 7</b> 3.15PM	PHYSICS	ENRICHMENT	ENGINEERING	PHYSICS	ENGINEERING
<b>PERIOD 8</b> 4.05PM	ENGLISH	ENRICHMENT	ENGINEERING	PHYSICS	ENGINEERING
<b>CLOSE</b>	16.45PM CLOSE	16.45PM CLOSE	16.45PM CLOSE	16.45PM CLOSE	16.30PM CLOSE

## DAY TO DAY ACTIVITIES

As part of the school day all students take part in enrichment activities such as GreenPower Racing, Raspberry Pi, Aircraft Modelling, Yoga and Duke of Edinburgh. Enrichment opportunities are refreshed every term, with students getting the opportunity to take part in 3 sessions over the course of the year.



## SUPPORT & GUIDANCE

We know that young people need support and guidance as they grow into young adults. Our meetings and engagement with families before students start with us set the tone; we're a small school so we know our students and treat them as individuals.

Security and safeguarding in all its forms is our primary concern as we deal with day-to-day matter with students. Our aim is for all our students to feel safe and supported. We work in close partnerships with neighbouring Local Authorities, Health, Youth and Counselling services to achieve this aim.

Our Student Support Director and the team support students' additional learning needs, through 1:1 and group work on academic support, social development and confidence building. Our small class sizes ensure that students are given in-depth attention by teachers.

A combination of mentoring and small group support provides the day-to-day back-up for student achievement and engagement with their learning.

A wider programme of moral, cultural, health and social education will help our students develop as thoughtful young citizens.

With our strong emphasis on preparing young people for their future, careers guidance is central to their development. Our focus on employability skills, as well as academic success, means that students develop the skills they need to thrive when they graduate from the UTC.

The support of parents and carers is an extremely important element, therefore we work closely with parents and carers to understand and support every student and to ensure that we are easily contactable.



## UTC SNAPSHOTS



### GPUTC STUDENTS BREAK A WORLD RECORD!

The Class of 2016 broke a Guinness World Record by constructing the world's largest pyramid made entirely out of recycled sheets of paper. Measuring at 3.51m tall, the world record took over 100 people, over 6000 sheets of paper and two days to create!



### JUNIOR FIELD GUN COMPETITION

Students from GPUTC competed in the Royal Navy's prestigious, invite only, Junior Leaders Field Gun (JLFG) Competition at HMS Collingwood in Fareham. The competition is designed to inspire the scientists, engineers and technicians of the future, helping to build essential skills for the world of work, including team work, self-reliance, resilience and communication. Team GPUTC came 8th out of 18 teams after a gruelling week of training.



### THE RACE TO SUCCESS

Year 12 students at the Greater Peterborough UTC took part in the season opener of the acclaimed GreenPower Education Trusts (GET) Formula 24+ category. Through the design and manufacturing process over the course of 9 months students have had their engineering, design, team-building and problem solving skills be put to the test.



### STUDENTS GET HACKING

GCSE Computer Science students took part in a legal hackathon as part of the national Cyber Security Challenge UK. The aim of the challenge was to test our students' cyber security skills by getting them to defend a virtual PC from threats and viruses. The team had to play a series of online qualifying rounds, which challenged their networking, coding and cyber security skills.

## HOW TO APPLY

Students that apply to join the UTC are both academic and practical and like to work with their head and their hands. Enthusiastic, positive and ready to treat every day like a job interview are the students who are offered places. If that sounds like you, put in an application to join us in Year 10 or Year 12. For our full admissions policy visit our website [www.gputc.com](http://www.gputc.com).

### KEY DATES

**Application Opens:**  
1st September 2017

**Application Closing Date For Year 10:**  
31st March 2018

**Application Closing Date For Year 12:**  
Rolling Deadline

### CRITERIA FOR ENTRY IN YEAR 10

You should have a demonstrable interest in either of our specialisms, Engineering or the Built Environment. Following your application, you will be invited to meet the Principal for an informal interview to discuss both what you would like to achieve and what you can study with us.

### CRITERIA FOR ENTRY IN YEAR 12

To fully access our curriculum, you should be predicted grade 5's in Maths and Science, as well as this, we expect at least another three subjects at grade 4, one of which must be English. In addition to this, you should have a demonstrable interest in either of our specialisms, Engineering or the Built Environment. Following your application, you will be invited to meet the Principal for an informal interview to discuss your goals and what you'd like to achieve, as well as what you can study with us.

There are three ways to apply for a place at GPUTC. You can apply directly to us by filling out our application form which can be found at the back of this prospectus. Alternatively, you can fill out the application form online which can be found on our website. The final way is to put an application in through UCAS Progress.

**Stage 1:** Visit the UTC at a Drop in Monday or an Open Evening

**Stage 2:** Apply to the UTC

**Stage 3:** Attend a student interview

**Stage 4:** Attend UTC Taster events and Trips

**Stage 5:** Offer of a place from the UTC

**Stage 6:** Fill out options forms and confirm your place at the UTC

**Stage 7:** Enrol onto the UTC Summer School Programme

**Stage 8:** Start your journey at the UTC

To find out more about our curriculum and to see the facilities on offer, come and attend one of our open evenings or Drop in Mondays, find out more information here: [www.gputc.com](http://www.gputc.com).



MARIAH

“

No other school in Peterborough would be able to help me to pursue my dream of becoming an Architect like the Greater Peterborough UTC, and that is why I joined. GPUTC specialise in the Built Environment, which, I study along with A Levels in Maths and Art. Maths is definitely a difficult subject, but the support at school has made it much easier for me. Before I joined the UTC I was a very shy and quiet person, however my confidence has really improved and I have made some great friends. Working with sponsors such as Larkfleet Homes and working on the employer project they have set us during the year has cemented my decision to pursue architecture at University. Not only have I excelled academically, I was selected as the Head Girl for the UTC! This year I will work with students to improve the UTC and to make sure that we maintain the community that we feel so proud of.

”



IMRAN

“

I want to be a mechanical engineer when I grow up, so when I heard that I could specialise in Engineering from Year 10 I knew I had to find out more. When my friends from my old school ask me what the UTC is like I can 100% say it's the best place to study engineering and also to concentrate and get down to get what you want in life. My highlight of the year has been interacting with the school's employer sponsors. They are friendly, interactive and set you challenges and activities when they come to the school. GPUTC has even helped me to get work experience in the field that I want to go into – It is a place I would recommend to everyone.

”



GERAN

“

Knowing that we have access to £2 million of state-of-the-art equipment at the UTC was one of the reasons that I joined the school. I really enjoy the Built Environment as it is a mix of learning in the classroom, practical experience and working with the sponsors. When I joined GPUTC, I was told that the school are trying to create young people that are ready for work. I know that when I finish my studies I want to carry on exploring the Built Environment whilst making use of my A Level Product Design and Geography.

”



ELODIE

“

I have always had an interest in engineering, since I was a little girl. A lot of that has to do with the fact that I have grown up around engineers. In Year 10 alongside the engineering course we also studied for our GCSEs, with computer science being my favourite. I really enjoy the coding and electronics element of the course and the UTC allows me to merge all of the things I like to study in one place. It helps that everyone is really friendly at the UTC and that it feels like a family.

”

## TRAVEL

The Greater Peterborough UTC caters for students travelling to the campus for up to 25 miles. We share the bus network with our sponsor Peterborough Regional College to support your travel arrangements. Bus travel is heavily subsidised, at £180 for the whole year. Please find a table of the current bus routes the network covers. For pickup and drop off times please visit [www.gputc.com](http://www.gputc.com).

Please note that the bus routes are subject to change to reflect the needs of our students across the wider campus. If students would prefer to cycle, ride or drive, there is a secure area for bikes, motorcycles and also a free student car park situated via the Eastfield Road entrance\*. Transport cannot be provided for students from any other points than those listed. Unfortunately, we cannot extend the subsidies to those who would want to use timetabled Stagecoach or Delaine services from other locations including those within Peterborough. For the latest updates to our bus routes please visit [www.gputc.com](http://www.gputc.com).

\* Students who live within a two-mile radius of GPUTC are unfortunately not entitled to a car parking permit.

### ROUTE 1

Earith ▶ Colne ▶ Somersham ▶ Warboys ▶ Upwood ▶ Bury ▶ Ramsey ▶ Ramsey St Marys ▶ GPUTC

### ROUTE 2

Manea ▶ Chatteris ▶ Benwick ▶ Ramsey Forty Foot ▶ Ramsey Mereside ▶ Pondersbridge ▶ GPUTC

### ROUTE 3

Doddington ▶ Wimblington ▶ March (South) ▶ March (Central) ▶ GPUTC

### ROUTE 4

Turves ▶ Coates ▶ Eastrea ▶ Whittlesey ▶ GPUTC

### ROUTE 5

Elington ▶ Buckden ▶ Brampton ▶ Huntingdon ▶ Alconbury ▶ Stilton ▶ Folksworth ▶ GPUTC

### ROUTE 5B

Sawtry ▶ Connington ▶ Yaxley ▶ Hampton Vale ▶ GPUTC

### ROUTE 6

Oundle ▶ Warmington ▶ Hampton ▶ GPUTC

### ROUTE 7

Carlby ▶ Essendine ▶ Ryhall ▶ Great Casterton ▶ Stamford ▶ Wittering ▶ Wansford ▶ Ailsworth ▶ Castor ▶ GPUTC

### ROUTE 8

Morton ▶ Bourne ▶ Thurlby ▶ Baston ▶ Langtoft ▶ Deeping St James ▶ Market Deeping ▶ Northborough ▶ Glinton ▶ GPUTC

### ROUTE 9

Holbeach ▶ Whaplode ▶ Moulton ▶ Weston ▶ Cowbit ▶ Crowland ▶ Newborough ▶ GPUTC

### ROUTE 10

Pinchbeck ▶ Spalding ▶ GPUTC

### ROUTE 11

Wisbech ▶ Leverington ▶ Wisbech St Mary ▶ Parson Drove ▶ Murrow ▶ GPUTC

### ROUTE 12

Spalding ▶ GPUTC

### ROUTE 13

March (North) ▶ March (West) ▶ Guyhirn ▶ Thorney Toll ▶ Thorney ▶ Eye ▶ GPUTC

## FACILITIES

Our school is itself an example of sustainable construction. The £12 million building boasts a rainwater harvesting system and photovoltaic generator – both of which are used as an educational aid for our students.

Inside, our state-of-the-art facilities enable the 'learning by doing' approach central to our method of teaching. These facilities have been carefully developed in close collaboration with our employer sponsors. The specialist equipment at GPUTC workshops helps our students to practice the 'learning by doing approach'.

GPUTC is truly at the leading edge of technology in learning, as wireless technology can be used anywhere to access work and study resources. The school features a canteen catering for a number of different diets and dedicated student zones for both sixth formers and GCSE students.

## FINANCES

There is no tuition fee at the GPUTC as all students under the age of 19 are fully funded by the government. Financial assistance such as Student Bursaries and Grants are available, providing the criteria is met. In cases of financial difficulty GPUTC will try to help; please get in touch with us if this is the case.

## STUDENT SUPPORT

GPUTC is a small school with a maximum capacity of 400 students. A smaller community allows for staff to know all students, offer one-to-one support and of course smaller classes. Therefore, the level of student support available to you is more than what you would expect to find in any other school because of our size. Safeguarding is something we take very seriously and we are committed to providing a safe and secure environment. Pastoral support is offered through the mentor program and from our Student Support Team which ensures that progress is constantly reviewed.

GPUTC is also committed to equality and diversity and welcomes students of all backgrounds, providing a wide range of facilities for everyone. We want to make sure you feel valued and respected at all times and that you in turn extend this respect to all other members of the GPUTC community.

Provisions will be made for students who have GPUTC named on their statement or health plan. Full support at all levels throughout GPUTC ensures you will fully benefit from the specialist technical resources available. GPUTC assures parents and carers that it complies with the requirements of the Disability Discrimination Act. If you have a disability or disabilities, please ensure that we know what you need in order to help you succeed. The GPUTC's policies and prospectus can be made available in alternative formats. To enquire please email: [info@gputc.com](mailto:info@gputc.com) or call: **01733 715950**.



## VISIT GPUTC

Find out more about GPUTC at one of our open evenings:

**Thursday 19th October 2017** 6.00pm - 8.00pm

**Saturday 25th November 2017** 10.00am - 1.00pm

**Tuesday 6th February 2018** 6.00pm - 8.00pm

**Thursday 19th April 2018** 6.00pm - 8.00pm

**Monday 4th June 2018** 6.00pm - 8.00pm

Pre-register by visiting [www.gputc.com](http://www.gputc.com) or call 01733 715950.

Alternatively, there is an opportunity to come and see us at our term time weekly Drop in Monday session which takes place every Monday from 5pm - 7pm. This is an opportunity to tour our £12 million state-of-the-art building, hear about the curriculum and ask any questions that you may have. You do NOT need to book in to visit us at a drop in session.

### Tasters Week:

**Monday 12th February 2018 –  
Friday 16th February 2018**

We run a number of taster events and information sessions throughout the year. Please come along to find out more or ask any questions that you may have. We will be running tasters during the February Half Term, more information will be available closer to the time.



## STUDENT'S DETAILS

First Name

Surname

Date of Birth

Sex

Male

Female

Student's Primary Home Address

Tel:

Additional Address (if applicable)

Tel:

## CURRENT SCHOOL DETAILS

School Name

Date Started

Current School Year

## PARENT/CARER DETAILS

Title

First Name

Surname

Relationship to student

Email

Mobile

Home Telephone

HOW DID YOU FIND OUT ABOUT GPUTC?

## COURSE DETAILS

Specialism  Engineering  Built Environment Year Group  Year 10  Year 12

Please provide a short statement on why you have chosen to apply to GPUTC and why you have picked your chosen specialism:

If applying to Year 10: What are your favourite subjects at school?

If applying to Year 12: Please list your estimated grades in Maths, English and Science.

## ADDITIONAL SUPPORT

If you tick any of the below a member of staff will be in touch to discuss your support needs.

Do you have a difficulty, disability or a health need which may affect your ability to study?

 Yes  No

Do you receive additional support at your school/college?

 Yes  No

Do you have a Learning Difficulty Assessment (LDA) or Education Health Care Plan (ECHP)?

 Yes  No

I confirm that I wish to apply for a place for my child at the Greater Peterborough UTC. I understand that the place may be withdrawn if it is offered on the basis of fraudulent or misleading information. I understand that the information I give on this application will be shared with schools and other Local Authorities for school admission purposes. I certify that I am the person with parental responsibility for the child named in this form and that all the information given is true and accurate at the time of submission.

**By submitting this form, I confirm that I have read and understood the details above.**

Signature of Parent / Carer:

Date:

Signature of Student:

Date:

## FAQs

### WHEN CAN I JOIN GPUTC?

You can join GPUTC in Year 10 or 12.

### HOW LONG IS THE SCHOOL DAY?

The Greater Peterborough UTC building will be open to students from 8.30am - 5.00pm. The school day runs from 9.00am - 4.45pm Monday to Thursday, and 9.00am - 4.30pm on Fridays.

### IS GPUTC A REAL SCHOOL?

GPUTC is a fully functioning school with all the facilities and assistance you would expect, plus the benefits of links with employers, guaranteed interview on student graduation and an opportunity to learn by doing through one of our technical specialisms.

### WILL STUDENTS ATTENDING GPUTC HAVE TO WEAR UNIFORM?

All students are expected to wear business attire, for practical sessions appropriate clothing will be worn. For more information on the specific garments please visit [www.gputc.com](http://www.gputc.com).

### HOW MUCH WILL IT COST TO ATTEND GPUTC?

All students under the age of 19 will be fully funded by the government.

### I AM CURRENTLY IN YEAR 12. CAN I ATTEND THE GPUTC?

If you wish to retake year 12 in a specialist environment, then you can apply to join year 12 at the GPUTC.

### DO I REALLY GET A GUARANTEED INTERVIEW WITH A SPONSOR WHEN I HAVE FINISHED MY STUDIES?

Yes, GPUTC guarantees all of our graduates a job interview with one of our employer sponsors as long as you pass the course.

### HOW CAN I VISIT GPUTC?

GPUTC run open evenings during the course of the school year, please visit our website to see the dates and to sign up. If you cannot make our open evening there is an opportunity to come and see us at our term time weekly drop in session #dropinMondays which takes place every Monday from 5pm - 7pm. This is an opportunity to tour our £12 million state-of-the-art building, hear about the curriculum and ask any questions that you may have. You do NOT need to book in to visit us at a drop in session.

*All information in this prospectus is believed to be correct at the time of print (October 2017) but this is subject to change at any time.*

# GREATER PETERBOROUGH UTC

Greater Peterborough University Technical College,  
Park Crescent, Peterborough, PE1 4DZ

WEBSITE

[www.gputc.com](http://www.gputc.com)

EMAIL

[info@gputc.com](mailto:info@gputc.com)

TELEPHONE

01733 715950

 [GreaterPeterboroughUTC](https://www.facebook.com/GreaterPeterboroughUTC)

 [GPUTC](https://twitter.com/GPUTC)

 [GPUTC](https://www.instagram.com/GPUTC)