



Prospectus

2017/18

The BRIT School provides a unique environment where students of all backgrounds come together in the pursuit of artistic and vocational excellence, in addition to the academic achievements every school strives to attain. The creative spirit, coupled with a strong sense of community resounds throughout.

Paul Burger

CHAIR OF GOVERNORS

We are grateful for the support from:



Welcome

The BRIT School is vocational, academic, inclusive and free. Everyone is welcome. We encourage our students to be original, responsible and ambitious.

Original. This is a school that celebrates individuality. You can be yourself at The BRIT School and find your own voice. We believe that creative individuals will shine in this environment and gain the confidence and skills to compose their own songs, script their own films and design games of the future.

Responsible. This is a school that encourages young people to be socially responsible. We tackle hard hitting social themes; we use the arts to explore the world we live in and have a strong belief in community work that means we share our skills with local, national and international organisations.

Ambitious. The BRIT School wants students to believe they can achieve great things and they often do. Our graduates are studying at some of the most impressive universities and vocational schools in the country and working throughout the creative and performing arts industries at every level. They also take diverse routes into education, social work, business and many other rich and diverse worlds. Our students have drive and energy and discipline.

We are a forward-thinking school which embraces new digital technologies alongside more traditional ways of working and learning. The creative and performing arts are among the most significant employers in the country and the transferable skills taught at the BRIT School will hopefully help young people as they journey through life. The school inspires compassion, cooperation and confidence.

This is a hardworking, fun, passionate school packed with dedicated individuals who love the performing and creative arts and recognise the importance of a thorough and robust education in all subjects. We believe in developing well rounded, articulate, kind and dynamic young people and want to encourage you to visit us, read this prospectus with excitement and see if this is the right place for you.



Stuart Worden, **Principal**





Contents

Applying to The BRIT School	4-5
Facilities	6
Where our students go	7
Our Curriculum at Key Stage 4 & Post 16	8-9
Creative and Performing Arts	10-11
Our Courses	
Film & Media Production	12-13
Interactive Digital Design	14-15
Technical Theatre Arts	16
Visual Arts & Design	18-19
Community Arts Practice	20-21
Dance	22-23
Music	24-25
Musical Theatre	26-27
Theatre	28-29
Frequently Asked Questions	30-31
Location & Catchment Area	33
Admissions Policy & Procedure	34-39
Always BRIT	40

Applying to the BRIT School

We have two intakes

Key Stage 4 (aged 14-16) and Post 16 (aged 16-18).

You will need to apply for Key Stage 4 in the September when you begin Year 9 in your current school. You will need to apply for Post 16 in the September you begin Year 11 in your current school. Applicants who will be 18 at the start of the course cannot be considered. We do not admit students into Years 11 or 13. The BRIT School application process takes around 10 months.

Fill in the application form either online here: applications.brit.croydon.sch.uk or on paper through the post to The BRIT School, 60 The Crescent, Croydon CR0 2HN. If you are applying for Key Stage 4 you need to make sure your application reaches us by 3rd January 2017, and if you are applying for Post 16 the deadline is dependent on which course you are applying for. The closing date for Dance, Music, Community Arts Practice, Musical Theatre courses is 18th November 2016. We give additional time to the following courses in order that portfolios can be prepared. For Film & Media Production, Interactive Digital Design, Technical Theatre Arts and Visual Arts and Design courses the closing date is 27th January 2017.

If your application is successful

You will be invited to a practical workshop/audition. Please read the Admissions Policy found on p.34 carefully before making an application as this will explain the practical requirements and admission criteria.

Do I live close enough?

We accept students from most of Greater London, and some parts of Kent and Surrey. Catchment postcodes are on p.33 or visit www.brit.croydon.sch.uk for a full list. We are allowed to take ten percent of applicants from outside this area, but only if you show unusual merit. We discourage long journeys so check the length of your commute from home to Selhurst station, situated five minutes walk from the school. You will need proof of your address during the application procedure to show you are in the catchment area.

Do I have to pay?

It is free to attend The BRIT School. However, limits on the School's budget mean that we do need to charge for certain activities, such as non-curriculum visits and peripatetic music tuition. In some subjects, students will also need to provide their own specialist professional equipment; each course's individual documentation provides guidance.

Can I get financial support?

We have limited funds for bursary grants to support travel costs, free school meals and peripatetic lessons. This support is available where the main family income comes from Job Seeker's Allowance, Income Support, Widowed Parent's Allowance, Incapacity Benefit or a State Pension. We will also consider applications from students with a low family income. A copy of the Charging and Remissions Policy is available on request.

When will we find out?

Workshops will be held from December to March and decisions will be communicated at the beginning of April 2017.

Can I apply if I have additional educational needs?

Our Additional Educational Needs (AEN) Department provides support for students with learning difficulties in order to help them overcome barriers to their learning and fulfil their potential.

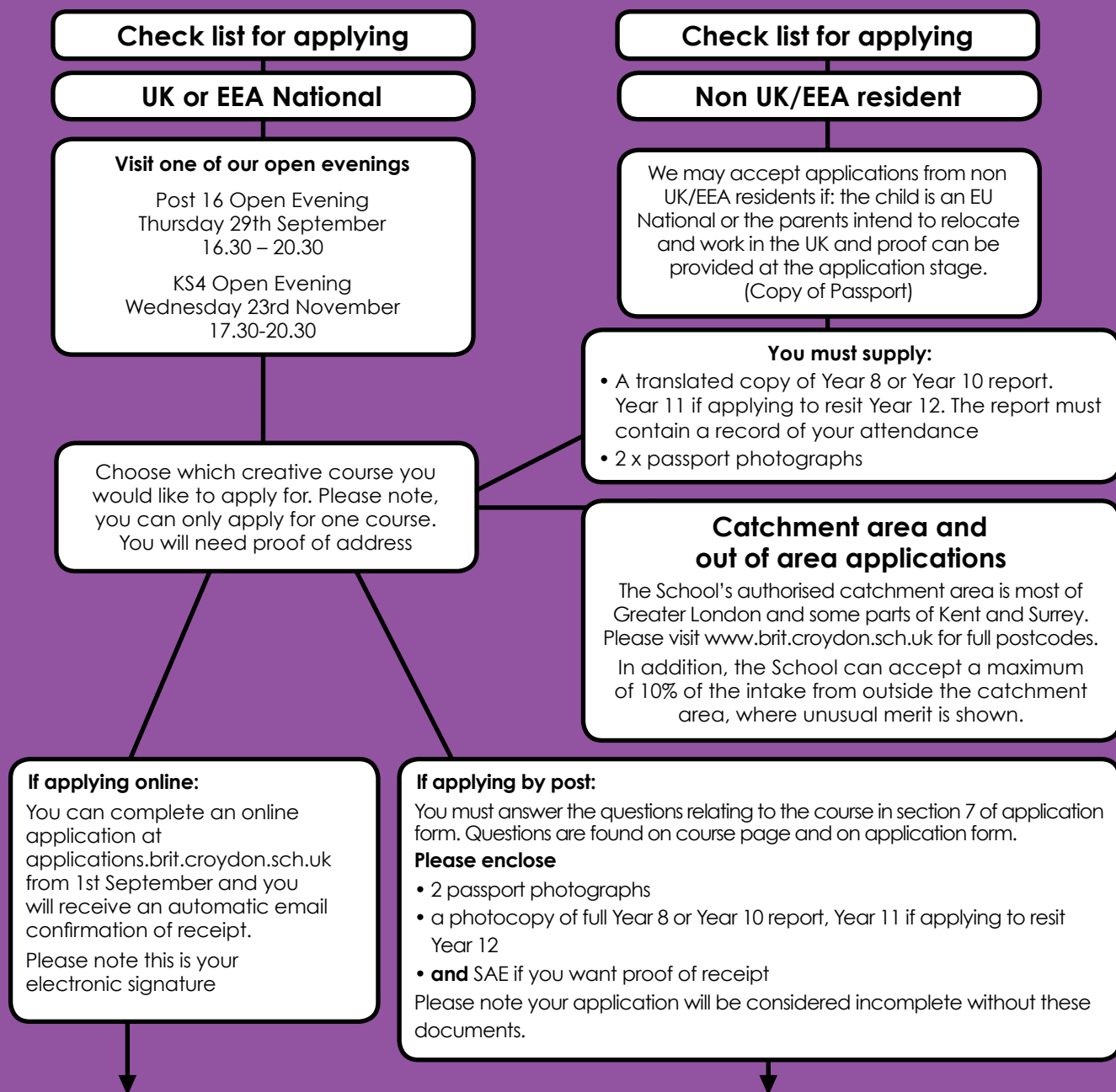
The BRIT School welcomes applications from students with additional educational needs, in accordance with the School's inclusion policy. However, you must of course still fulfil the criteria set out by the particular strand for which you would like to apply, such as passion and talent in your chosen area.

It is important that you let us know on your application form of any identified additional educational needs, so that we can take this into account throughout the admissions process and beyond. All applicants with a Statement of Educational Need (or EHC Plan) issued by their Local Authority will be supported in their interview by a member of our AEN Department.

If a student with additional educational needs is granted a place, the AEN Department will make contact prior to their admission in order to begin the process of working together with parents/carers and students. Some students are offered support within the classroom from one of our Learning Support Assistants (LSAs), while others spend time within the AEN Department's facilities on an individual or group basis.

We also support teaching staff by providing them with relevant information and training.

Application Process



Year Applying For	Course	Closing Date
Year 12 (Post 16) Performing Arts	Community Arts Practice, Dance, Musical Theatre, Music, Theatre	18 November 2016
Year 12 (Post 16) Creative Arts	Film & Media Production, Interactive Digital Design, Technical Theatre Arts, Visual Art & Design	27 January 2017
Year 10 (Key Stage 4)	All courses	3 January 2017

Workshops will be held from December to March. Please note we cannot change the date offered. See p.36 section 2B for the policy. Decisions will be communicated at the beginning of April 2017. Incomplete forms will not be processed. applications.brit.croydon.sch.uk

Our Facilities

Modern, useful and state of the art, our facilities are vital to what makes us one of the leading creative arts schools.

Each department has facilities designed specifically for their courses. The following is a small selection of what we have on offer:

- Two fully equipped theatres
- Three fully equipped dance studios
- Three computer design suites
- A scenic construction workshop and paint frame
- Recording studios for TV, radio and sound
- Costume design and construction rooms
- Make up and props workshop
- Print workshop and photography dark room

Additionally we have a learning resources centre, which is equipped with a computer suite, study area, a specialist arts library and archive. Professionally trained librarians are on hand to help you with your research and studies.

Images clockwise (from top): Learning resources centre, Additional Educational Needs department, the new BRIT Theatre, musical instruments.



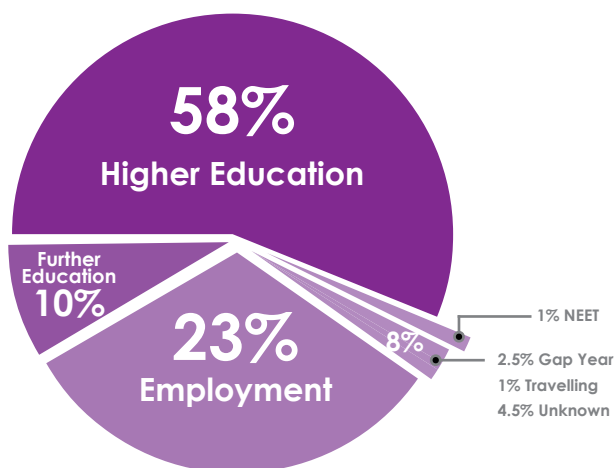
Where our students go

As part of your course you will be provided with the skills, information and experiences to make informed decisions about your future and prepare for the world of work and further study.

In 2015 99% of our students went into higher education, training or employment.

Typical professions that our students have gone into include: acting, dancing, music, stage management, technical theatre, recording studio work, film making, song writing, web design, animation, event management, visual arts and photography. In fact, the list is endless as the transferable skills that the students gain from their courses enable them to progress into a diverse range of careers.

Destinations of BRIT students leaving in 2015



"All 3 students that undertook their work experience here worked well as a team. They were willing to undertake work that was challenging or mundane and were a pleasure to have in the building. The BRIT school produces young people who are confident, kind and demonstrate a level of maturity beyond their years. Well done BRIT!"

Carmel O'Connor
Broadway Theatre

Case Studies



Charles Copsey on the set of Final Reflection

Charles Copsey (Film & Media Class of 2013)

Filmmaker and Creative Director of Core Films

Whilst at the School, Charles was awarded a Westfield Bursary to shoot a short film, 'Final Reflection' which premiered at BFI Southbank. His previous work 'Locket' won 'Best Fiction Film' at The BFI's Future Film Festival. With fellow students he set up the production company Core Films which produces films for clients including IKEA, The Guardian, Toshiba and Westfield.

Sinem Erkas (Visual Arts & Design Class of 2005)

Designer, Illustrator and Art Director

Sinem graduated from Central Saint Martins in 2008 with a First and has been freelancing since. Her latest work is designing book covers including; 'Far from the Madding Crowd' by Thomas Hardy, 'Girls Will Be Girls' by Emer O'Toole and 'The Versions of Us' by Laura Barnett. In 2014 she won the ABCD Award with her series redesign for F.Scott Fitzgerald's books, this year she was shortlisted for the same award for the book cover of 'If You Find Me'.

Will Kemp & Chris Burnage (Technical Theatre Arts Class of 2009/12)

Directors & Founders of Blue Elephant

Will and Chris formed Blue Elephant, a company that provides visual, audible, creative and technical aspects of events. The company's clients now include corporate event production companies, award ceremony organisers, promoters, festivals, music acts and venues. Their recent commission was providing WYSIWYG programming services for the latest Pharrell Williams tour.

Lucy Hollis (Film & Media Production Class of 2015)

Radio Presenter at Meridian FM

"A lot of people ask if I dance, sing, act as that's what the [School] is most well-known for but, in fact it's a whole wider range. I studied everything from radio to film studies to practical work in the TV studio!"

Our curriculum

Key Stage 4



The Key Stage 4 Study Programme is made up of 3 parts:

1. Strand

This is the specialist creative area you have chosen to study at the BRIT School. 5 hours a week is dedicated to Strand time and there are additional activities, rehearsals, workshops, events and performances that make up the unique BRIT educational experience.

Strand Subjects at KS4

- Film & Media Production
- Dance
- Interactive Digital Design
- Music
- Musical Theatre
- Theatre
- Visual Arts & Design

2. Your Core Curriculum

The BRIT School is committed to providing a broad and balanced education that values the essential knowledge, skills and understanding within National Curriculum subjects.

Core Curriculum	Subject
	English Language (1 GCSE) English Literature (1 GCSE)
	Mathematics (1 GCSE)
	Combined Science (2 GCSE's or equivalent)
	Physical Education- PE (not examined)
	Personal Professional Development - PPD (not examined)

3. Your Options

You must select 3 preferences of GCSEs/BTEC in each of the 3 Option Blocks to complete your study programme at the BRIT School.

Block A	Block B	Block C
Drama	Dance	Art & Design
Film	Drama	History
French	French	Physical Education (PE)
History	History	Resistant Materials Technology – Design for Stage
Information Creative Technology (ICT) BTEC	Media	Spanish
Media	Music	Sociology
Sociology	Sociology	Textiles
Spanish	Spanish	Triple Science
*Upskiller	*Upskiller	

*Upskiller

The BRIT School is committed to enabling **all** students to succeed. The purpose of the Upskiller courses is to ensure students needing further provision and support are able to achieve the very best outcomes in GCSE English Literature, GCSE English Language and/or GCSE Maths. The Upskiller courses are **instead** of the Options courses in those Blocks and places are allocated based on our induction testing and prior attainment data.

Key Stage 4 Student Study Programme

The 3 parts make up the students' whole Study Programme at The BRIT School

Strand + Core Curriculum + Options	Total hours per week = 26
------------------------------------	---------------------------

Please note that at Key Stage 4 and Post 16, qualifications stated are correct at the time of printing.

Our curriculum

Post 16

Study Programmes

A Study Programme is what makes up a student's learning experience whilst at an educational institution. For all of our students at The BRIT School, this will be primarily taken up by time spent on their chosen Strand.

Students must be aware that when they commit to a Study Programme they are committing to The BRIT School's expectation of 96% or higher for attendance across all subjects.

Study Programme 1

All Post 16 provision must ensure that all students have either achieved or are working towards achieving at least a C grade in both GCSE Maths and English Language. In order to study at The BRIT School, it is mandatory that if a student has failed to achieve a grade C in Maths and/or English they will be automatically placed on Study Programme 1. This will mean spending 15 hours per week on their Strand and up to an additional 4 hours on Maths and/or English GCSE pathways.

Study Programme 2

Our students will have applied to The BRIT School in order to focus on their Strand. This institution is hugely demanding on a student due to the high levels of expectation placed upon them and for many of our students the recommendation will be to study purely their Strand e.g. Study Programme 2.

Some of our students would like to further their knowledge of another area or simply support their breadth of knowledge. For these students they must carefully consider the type of course that they wish to study; its relevance to their chosen career path; the impact that this may have on their Strand and the application and dedication that will be required to complete a fourth qualification. Subject to availability and suitability, they can select from:

Study Programme 3

Study Programme 3 is made up of 15 hours per week dedicated to your Strand and a further 5 hours per week dedicated to an AS subject/pathway. Whilst the Strand will cover two years of study, the AS will be completed in one year. There is also an expectation for all AS subjects that students spend an additional 5 hours per week on independent study for their pathways subject. Some subjects may require a portfolio or evidence of work on the induction day.

Study Programme 4

In exceptional cases, students may wish to follow Study Programme 4. This is made up of 15 hours per week dedicated to your Strand and a further 5 hours per week dedicated to an A level subject/pathway. Both courses will be completed over a two year period. There is also an expectation for all A level subjects, that students also spend a minimum of 5 hours per week on independent study for their pathways subject.

Study Programme 5

To provide breadth, Study Programme 5 offers a more vocational addition to a student's education. As with all of the other Study Programmes, 15 hours will be spent on their Strand with a further 5 hours each week on a BTEC Certificate/pathway. The BTEC Certificate will be completed within one year. Some subjects may require a portfolio or evidence of work on the induction day.



What are the Creative Arts?

The UK is a global leader in the creative industries. The confidence and creativity gained from creative subjects play a key role in developing the skills all employers crave: problem solving, generating ideas, teamwork.
Did you know 34% of CEOs from FTSE 100 companies have an arts background?

The creative arts are now worth £84 billion per year to the UK economy.

The UK Creative Industries

GVA OF UK INDUSTRIES 2014 (£MILLION)

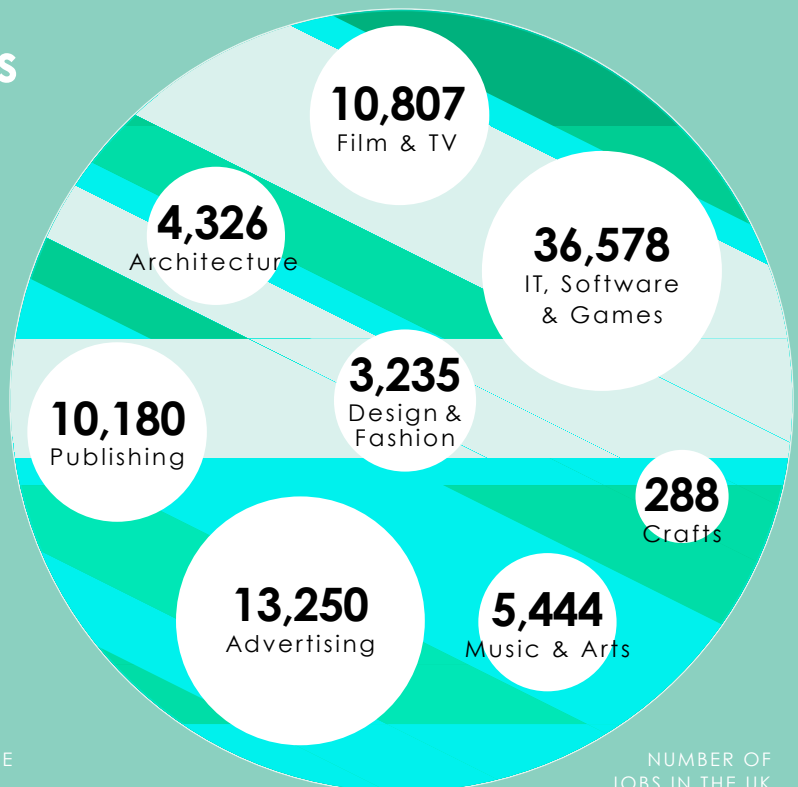
Value

£84.1bn A YEAR

£9.6m PER HOUR

8.9% INCREASE IN GVA OF THE CREATIVE INDUSTRIES BETWEEN 2013 AND 2014

OFFICIAL STATISTICS MEASURING THE CONTRIBUTION MADE BY THE CREATIVE INDUSTRIES TO THE UK ECONOMY IN GROSS VALUE ADDED.



NUMBER OF JOBS IN THE UK CREATIVE INDUSTRIES.

The Creative Arts Courses will help you find a career route into industries like film, print, publishing, advertising, visual arts, crafts, design, fashion, interactive software, gaming, and television and radio.

What Creative Arts courses could you study with us?

Film & Media Production

Interactive Digital Design

Technical Theatre Arts

Visual Arts & Design

How will Creative Arts Courses support a successful career?

In 2015, 99% of BRIT School students took up their chosen place within:

1) Higher and Further education- Creative Arts students were accepted onto a range of courses at excellent institutions such as Central Saint Martins, Norwich University of the Arts, Hertfordshire, Goldsmiths, Bournemouth and Falmouth Universities, London College of Fashion, LCC and Slade.

2) Employment and Training- Creative Arts students have gained employment with the prestigious Royal Albert Hall, Marvel, PRG, Ralph Lauren, BBC and ITV, Delta Sound, White Light and Britannia Row.

What are the Performing Arts?

The Performing Arts sector is made up of a wide range of job roles, which reflect all aspects of putting on a performance, including but not limited to the following:

Actor (including TV, radio and theatre work), agent, arts administrator, box office manager, choreographer, community artist, dancer, director, education manager, musician, practitioner, producer, company manager.

Economy

Performing Arts industries provide more than one in 20 jobs in the UK and generated £15.1 billion in turnover in 2012-13.

Health and wellbeing

Research has evidenced that a higher frequency of engagement with Performing Arts is generally associated with a higher level of wellbeing.

Society

Employability of students who study arts subjects is higher and they are more likely to stay in employment.

Education

Engagement in Performing Arts improves the cognitive abilities of young people.

CENTRE FOR ECONOMICS AND BUSINESS RESEARCH,
REPORT FOR ARTS COUNCIL ENGLAND JULY 2015



How will Performing Arts Courses support a successful career?

Training in the performing arts develops the 'soft skills' such as increased confidence, team working, problem solving, motivation and self-esteem, aspiration, emotional and social skills and the management of personal relationships. Students progress to a wide range of courses at home and abroad at internationally recognised institutions such as Bird, Institute of Contemporary Music Performance, Guildhall School of Music & Drama, LAMDA, Urdang, RADA, The Royal Central School of Speech & Drama, and PARTS (Brussels) to name but a few. We also have students going straight into training or employment in the industry itself.

What Performing Arts courses could you study with us?

Community Arts Practice

Dance

Music

Musical Theatre

Theatre

Film & Media Production

CREATIVE ARTS COURSE



Course Overview

Do you want to be behind the camera rather than in front of it? Do you have a desire to learn how TV, radio and film are really made? The Film & Media Production department will be the right place for you. From film and television writing, directing and producing, to radio broadcasting and photography, you will cover it all here. What's more, you will be learning up-to-date industry techniques, which are easily transferable to a career in the rapidly changing media sector or further education and training once your course is completed.

Student Experience

An array of facilities is hiding behind the doors of our corridors, with a TV studio and gallery, two radio studios, two video editing suites, and a photography department all on offer to give you practical media experience.

One of the summer highlights of the Film & Media Production department is BRIT FM Online, where Film & Media Production students produce and present a variety of shows which are broadcast live online during the 24/7 ten day broadcast.

You may even get the chance to call yourself an award winner before your career begins – the department holds its annual show (The Obies) in July at the British Film Institute (BFI Southbank). Students from Film & Media Production have the chance for their work to be nominated and shown in front of an audience of 450 students, teachers, family, friends and media industry professionals. The coveted Obie statuettes are awarded for Best Music Video, Best Short Film, Best Television Show, Best Television Advert, Best Film Sequence, Best Documentary and Best Film Trailer.

What Qualities do I need?

You should have a passion for at least one area of media, whether it be television production, filmmaking, photography or radio. You should also be enthusiastic and a committed team player. If you are applying to join the Post 16 course, you will need to bring a portfolio of work to the interview which demonstrates your commitment to and experience in at least one area of the media.

Typical Careers

Camera Operator
Assistant Editor
Radio Producer

Key Stage 4 Course Information Film & Media Production

What will I Study?

You will study for a **BTEC Level 2 First Certificate in Creative Digital Media Production**. The BTEC Level 2 First Certificate is **equivalent to two GCSEs at A* – C grading**.

The core area of study will be in film making, with some additional work in radio and photography.

How do I Apply?

Answer the following questions in section 7 of the application form:

- a) Think about any relevant video work you may have done in or outside of school. Describe the project and your role within it.
- b) What media-related projects have you been involved in, outside or in school? For instance, you may write for a newspaper, take photographs in your spare time, or experiment with radio. Describe what you enjoyed about doing this work.
- c) What qualities do you think you need to succeed on this course?
- d) Choose one of the examples of student work on our website www.brit.croydon.sch.uk/FMP14 and describe what is good about either the camerawork, or the soundtrack, or the narrative and characters.

Post 16 Course Information Film & Media Production

What will I Study?

At the end of your study you will have gained the **UAL, Level 3, Extended Diploma in Creative Media Production and Technology**. It is the **equivalent of three A Levels**, and can be translated into UCAS points for easy application to universities.

A wide range of media skills will be taught on this course, concentrating mostly on film and television, with some parts of the course focused on photography and radio.

How do I Apply?

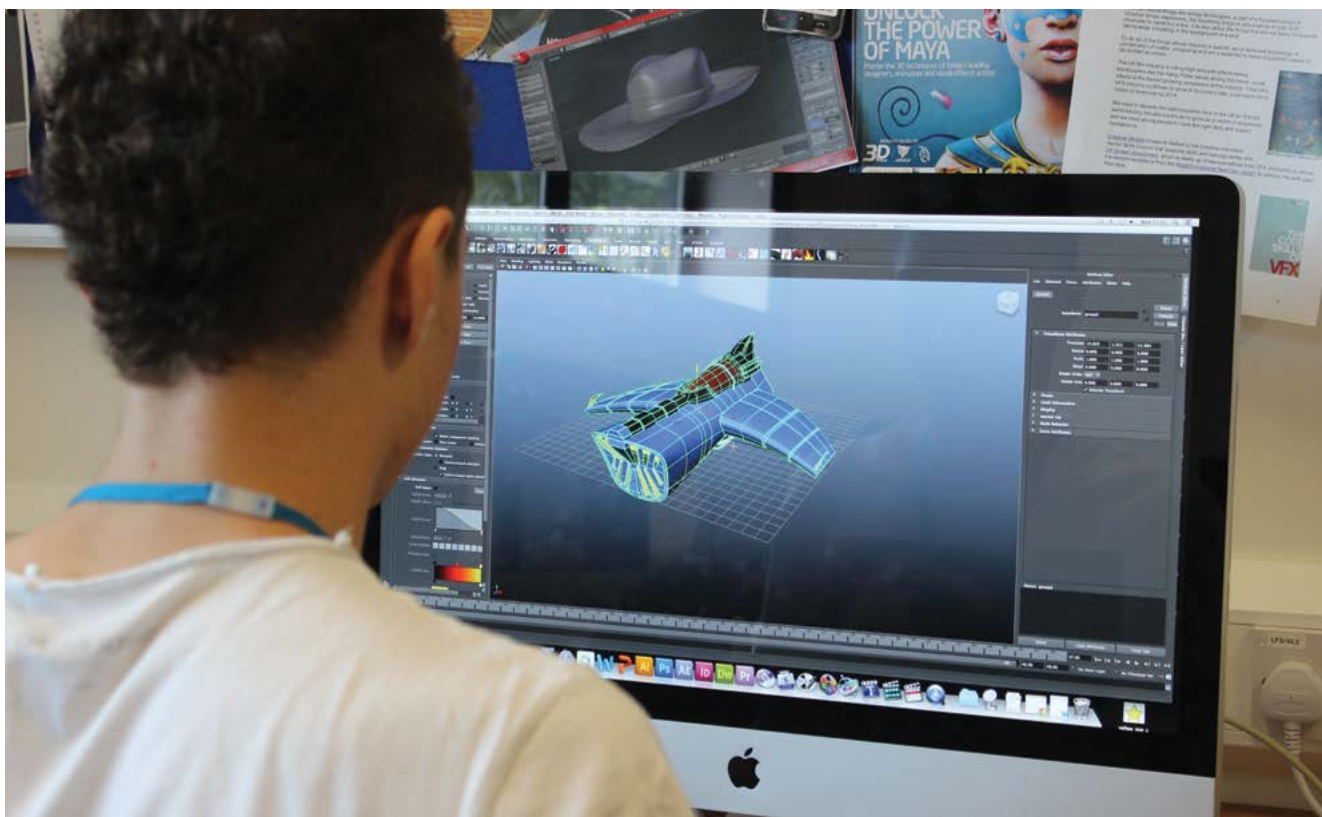
Answer the following questions in section 7 of the application form:

- a) What experience outside of school do you have of shooting and editing video?
- b) What other media-related work outside of school are you involved in? For instance, you may be a keen photographer, or a script writer, or even make radio broadcasts.
- c) What qualities do you think you would need to succeed on this course?
- d) Choose one of the examples of student work on our website www.brit.croydon.sch.uk/FMP16 and describe what is good about either the camerawork, or the soundtrack, or the narrative and characters.



Interactive Digital Design

CREATIVE ARTS COURSE



Course Overview

We are offering an innovative and exciting Interactive Digital Design course that will allow students to explore a range of new technologies and practices in design that are relevant to the pace of technological change. The Interactive Digital Design course introduces students to the design and study of computer games, web and graphic design, motion graphics and 2D and 3D animation.

Student Experience

So that you can get the most up to date experience on this course, there are three fully equipped iMac design studios with the latest design software including the full Adobe Creative Suite and Autodesk Maya. Plus you get to use hardware such as Wacom graphics tablets, iPads, DSLR cameras and a mobile green screen. The Interactive Digital Design course promotes and exploits technology; mobile devices and social media within the teaching and learning environment.

The course promotes and encourages visits from professional interactive designers, animators, and games developers. We have had talks and workshops from companies such as Google, Aardman Animation and Escape Studios. We ensure our students are kept up to date with current design initiatives by attending exhibitions, entering competitions and exhibiting student work in our Interactive Digital Design exhibition.

What Qualities do I need?

You should be a young designer who is interested in technology and the creative opportunities it presents. We want students who have ideas, who are interested in design and who are strong at working both independently and collaboratively. You have to be self motivated and have an enthusiasm to learn. You will have ideally come from a media, ICT, art or design and technology background.

To find out more find us on Twitter @BRITSchoolIDD and Instagram BRITSchoolIDD.

Typical Careers

Animator - 2D or 3D
Visual Effects Composer
Games designer

Key Stage 4 Course Information Interactive Digital Design

What will I Study?

You will study for a **BTEC Level 2 First Certificate in Creative Digital Media Production** which is equivalent to **two GCSEs**. You will learn about the design and study of computer games, animation, graphic design and website production while on this course.

How do I Apply?

Please answer the following questions in section 7 of the application form:

- Why do you think you are suited to studying Interactive Digital Design?
- What experience do you have of using computers, technology and design software?
- How do you think this course will help you in your future career?
- Choose a piece of interactive media (e.g. a mobile app, website, animation, computer game) and explain what you think is effective about it.

Post 16 Course Information Interactive Digital Design

What will I Study?

In this extended programme of study you'll explore a wider range of new technologies related to the design of computer games, mobile apps, websites and motion graphics.

You will achieve a **UAL, Level 3, Extended Diploma in Creative Media Production and Technology (Interactive Digital Design)** at the end of your time at The BRIT School that will enable you to move into a variety of different career pathways and is **equivalent to three A Levels**.

If you hope to take a career in the industry, work experience is a core part of the course, and you will have the opportunity to expand your portfolio through exclusive work placements. Previous students have attended top London design agencies and even big companies like Google for their work experience.

How do I Apply?

Please answer the following questions in section 7 of the application form:

- Tell us about yourself and your experience in Interactive Digital Design.
- Why do you think you are suitable for this course?
- Choose a piece of interactive digital design (e.g. a mobile app, website, animation, computer game) and explain what you think is effective about it.
- If you were to design and create your own interactive media product, what would it be and why?



Technical Theatre Arts

Post 16 only

CREATIVE ARTS COURSE



Course Overview

Only available to those who are joining at aged 16, this course will teach you a wide range of technical, creative and management skills required to run theatre productions. From learning how to light a stage, to managing the sound, to designing and building the set and designing and creating costumes, this course will give you the foundation you need to pursue a career in the performing arts industry and go into higher education.

The BRIT School offers extensive theatre facilities, giving you the chance to learn and develop practical skills. By doing this course it will give you some real experience that will give you a good head start for a career in the technical theatre arts field. At the end of the two-year course you will achieve a **UAL, Level 3, Extended Diploma in Production Arts**.

Student Experience

Every show put on in the School is managed by the Technical Theatre Arts department. You will switch roles throughout the course which will develop your skill set and help you complete your course.

The equipment used by the department is industry standard state of the art and uses brands such as ETC, Avolites, Yamaha, Tomcat and Jenome, plus the department is sponsored by companies which include PRG, Britannia Row and Function One.

What Qualities do I need?

You will need to be dedicated, organised and a good timekeeper as a lot of the practical work you do will take place on productions outside of school hours. You should also have achieved a reasonable level in GCSE English and maths, as elements of the course are writing-based. While not mandatory, some theatre experience in any field would be useful.

How do I Apply?

Please answer the following questions in section 7 of the application form:

- a) Describe and comment on the sets, costumes, lighting and sound of any recent live performances you have seen. This could be anything from a live music concert, play or musical or performance you may have seen.
- b) What creative activities are you involved in that are related to the course? For instance you may have been involved in a school play, drama club, or play a musical instrument.
- c) Why do you think you are suited to the Technical Theatre Arts course?
- d) What do you think you will bring to the course?

Typical Careers

Stage Manager
Lighting, sound, costume or set designer
Theatre technician

YOU MAY ALSO LIKE: [Interactive Digital Design p14](#) / [Visual Arts and Design p18](#)



Visual Arts & Design

CREATIVE ARTS COURSE



Course Overview

Creative and passionate students are welcomed to the Visual Arts and Design department. You will study traditional and contemporary techniques in visual arts, sculpture, drawing and painting, and will also have the opportunity to explore a variety of specialist areas including fashion, illustration, community art, textiles, photography, digital design and fine art. We deliver a vocational qualification that enables students a greater understanding of the creative industries.

Student Experience

Visual Arts and Design has extensive facilities with studios that cater for 2D and 3D work. These facilities range from textiles, screen printing, photography studio/darkroom, and Mac & PC suite for digital manipulation. All projects have a vocational focus that offer opportunities to work with outside agencies as well as other departments within the school on community art projects. We also encourage students to take full advantage of going on trips within the UK and overseas; with recent cohorts taking trips to Berlin, Paris and Barcelona (Pictured right).

We encourage all students to proactively exhibit their work, both at school and externally. We support the curriculum with enrichment projects, so students have the opportunity to consider their work in a wider professional context. Students can choose from a variety of activities to extend their knowledge and understanding or feed their entrepreneurial spirit.

What Qualities do I need?

We believe those students who demonstrate an enthusiasm for arts and design and a passion to be a creative thinker, with the ability to overcome boundaries and challenges will be suitable candidates for this course.

Typical Careers:

Fine artist
Museum/Gallery Curator
Illustrator
Art therapist

Key Stage 4 Course Information Visual Arts & Design

What will I Study?

If you join us at age 14 you will learn and develop your knowledge of the basics of drawing, painting, sculpture, photography, animation, fashion, illustration and textiles.

As you develop through the course you also have the opportunity to choose a specialism. Once you finish your studies you will achieve a **BTEC Level 2 First Certificate in Art and Design, equivalent to two GCSEs.**

How do I Apply?

Answer the following questions in section 7 of the application form:

- a) What art and design techniques or equipment have you used? Why have you chosen these?
- b) What ICT programmes or online applications have you used and how? Give examples of how this has developed your art and design work.
- c) Tell us about yourself and your experiences in visual art and design. Which artists have inspired you and why?
- d) Choose a piece of art and design work and describe what you think is effective about it.



Post 16 Course Information Visual Arts & Design

What will I Study?

If you want to enter a career in visual arts and design this course aims to give you the practical skills and knowledge to do this. You will develop your techniques in drawing and life drawing, painting, sculpture, print making, illustration, web design, textiles, photography, live art and many more areas of art.

You will also have the chance to travel abroad on the department's annual overseas trip which also feeds directly into your final major project. At the end of your course you will achieve a **UAL, Level 3, Extended Diploma in Art and Design.**

How do I Apply?

Answer the following questions in section 7 of the application form:

- a) What art and design techniques or equipment have you used? Why have you chosen these?
- b) Which artists, crafts, people or designers have you been inspired by? How have you used them in your work?
- c) Tell us about yourself and about a favourite art and design experience.
- d) Choose a piece of art and design work and describe what you think is effective about it.



The BRIT School and the Community



The BRIT School works with community partners to reach out and engage with people in Croydon and surrounding boroughs. Every year the students work with different groups aiming to show how the role of the arts can make life better.

“Working with the local community has always been important to The BRIT School. We've had 25 years of running workshops and performances for all ages and community groups. From homes for the elderly to local nursery schools and from pupil referral units to Alzheimer's centres, the school really believes in creating relationships and sharing the skills and talents of our students with others. A creative and sharing community is a happy community. That's what The BRIT school wants to be part of and contribute to what's good about Croydon.”

Stuart Worden, Principal



Performing live music at the Royal Brompton Hospital; working with Baby Sarah's Home in Pondicherry, India; performing at St Christophers Hospice; performing *Shipwrecked*, a new musical for local primary school children.

Community Arts Practice

Post 16 only

PERFORMING ARTS COURSE



Course Overview

If you have a passion for performing arts and also want to discover how your skills can play more of a role that just on stage, our Community Arts Practice qualification provides you with the practical skills to enrich, inform and transform the lives of those in our community.

As the only key stage 5 course in the UK designed specifically to build skills in community arts delivery, you will train in acting, dance, music and directing and will also learn about the importance of applied theatre and evolve as an inclusive community arts facilitator.

This unique, creative and energetic course is a great way to give back to the community at the same time as building on technique and performance experience.

The Royal Central School of Speech & Drama has long been associated with The BRIT School. Centrals' prestigious BA Hons Drama, Applied Theatre and Education degree is a natural follow on for our students, as well as the BA in Acting and Community Theatre at East 15 and the Applied Performance and Community Theatre at Birmingham School of Acting.

Available only if you are aged 16 or over, you will achieve a **UAL, Level 3, Extended Diploma in Performing Arts** at the end of your course, which is the **equivalent to three A Levels**.

YOU MAY ALSO LIKE:

[Theatre p28](#) / [Musical Theatre p26](#)

Typical Careers:

**Arts Learning and Participation Manager
Community Dance Artist & Facilitator
Inclusive Theatre Director**

Student Experience

The Community Arts Practice course works with a range of partners in Chickenshed Theatre, Turtle Key Arts, SLiDE Dance Company and Camp Bestival. For the last 4 years, students have been invited to perform on the main stage at Camp Bestival, as well as facilitating a number of theatre workshops. Other partners also include Certitude, MIND, Age UK and each year students perform as part of the national Shakespeare week.

For your final assessment, you work on designing and producing your own community arts festival. These in the past have included theatre performances, dance classes, activity mornings, puppetry workshops and poetry and spoken word writing sessions.

What Qualities do I need?

A passion for the arts is vital, as is a keen interest in working with a wide range of people of all ages and backgrounds. You will also need to be highly committed, passionate and responsible as this course requires you to work and study outside of school.

How do I Apply?

Please answer these questions in section 7 of the application form.

- Give an example of an activity or project that you were involved in that was carried out as part of a team and that you were particularly proud of.
- What do you think makes you a suitable candidate for the course?
- How do you think being involved in a performing arts project could enrich the life of someone who has not had the opportunity to be involved in the arts before?
- If you could create your own community arts project, what would it be and who would it be aimed at?

Dance

PERFORMING ARTS COURSE



Course Overview

Ballet, jazz, tap, contemporary – whatever your dance style, you can learn more about it with us. From perfecting your skills in technical training to letting your creativity run wild in choreography and improvisational classes, our dance courses are designed to nurture your existing skills and lead you to experience dance in a way you have never imagined before.

As well as perfecting your technique in the studio, you will also perform regularly in our theatres as well as within the community, through professional visits, theatre trips and workshops.

Student Experience

The six fully equipped dance studios are always bustling with activity, and each of them has hi-fi facilities with iPod connectivity, TV and video players, plus mirrors.

You will also take part in show-stopping performances in our two on-site theatres and there is also the opportunity to perform at venues outside of school.

What Qualities do I need?

You should be passionate about dance and have a talent for it. If you are applying aged 16, it is desirable that you have had previous dance experience before. You should also have good time-keeping and have a reliable and determined character.

Typical Careers:

Contemporary Dance Artist
Choreographer
Commercial or Musical Theatre Performer
Teacher/Animateur

Key Stage 4 Course Information Dance

What will I Study?

You will be study for the **BTEC Level 2 First Certificate in Performing Arts (Dance)**, which teaches you more about choreography, performance, technique and the working practices of the performing arts industry. **It is equivalent to two GCSEs at A*-C grading.**

How do I apply?

Please answer these questions in section 7 of the application form:

- a) What and who has inspired you to study dance?
- b) Tell us about your dance training and experience to date.
- c) How do you think this course will help you in your future career?
- d) Describe the skills needed by a dancer to succeed in their career.

Post 16 Course Information Dance

What will I Study?

You will be working towards the **UAL, Level 3, Extended Diploma in Performing Arts, which is equivalent to studying for three A Levels** and you will learn a range of dance techniques, performance techniques and the theoretical aspects of the art.

As well as spending time focusing on perfecting your dance abilities you will also learn additional skills in singing, physical theatre and the business side of the industry.

How do I apply?

Please answer the following questions in section 7 of the application form:

- a) What and who has inspired you to study dance?
- b) Tell us about your dance training and experience to date.
- c) How do you think this course will help you in your future career?
- d) Describe the skills needed by a dancer to succeed in their career.





Course Overview

If you are committed to a career in the Music Industry, then studying with us is a great place to start. Whether your goal is to be a performer, songwriter, recording engineer or music journalist, you will develop industry-relevant skills within a challenging, well-supported and creative vocational environment. We offer a varied and well-rounded musical education to stretch and challenge you as a musician, and provide you with a wealth of skills to succeed in the industry.

Student Experience

The Music Department benefits from outstanding facilities including a digital recording studio, Apple Mac MIDI suite and four professionally equipped rehearsal rooms. Every year, students get the opportunity to perform in the school's 300 seat public performance venue, The Obie Theatre, as well as at a range of external venues.

Our close relationship with The British Record Industry Trust and the support of the school's governors results in music students being invited to perform at a range of prestigious events and venues each year. Recent examples include The BBC Radio Theatre, The Roundhouse and The National Portrait Gallery.

What Qualities do I need?

It is vital that students are already actively involved in musical activities both in and out of school. We are looking for open-minded, reliable team players who are focused and motivated. Being organised, responsible and able to meet deadlines is very important to us. You will also have an interest in the study of music as a wider subject and have the initiative to create musical opportunities for yourself and your peers.

For Key Stage 4, you will be: A confident performer on at least one instrument or voice.

For Post-16 you will also be: A confident performer on at least one instrument or voice and/or show a strong aptitude for and knowledge of music technology with a portfolio of work that you have created and can explain.

Typical Careers:

**Session Musician, Music Producer,
Sound engineer, Songwriter**

Key Stage 4 Course Information Music

What will I Study?

The **BTEC Level 2 First Certificate in Music** allows you to develop your musical skills and knowledge in many areas including music theory, practical and listening skills and composition. It is **equivalent to two GCSEs**. There are regular performance opportunities and students are provided with an understanding of the music industry and the range of careers available to them in the future, whilst being surrounded by like-minded musicians.

How do I Apply?

To apply for entry into Year 10, please answer the following questions in Section 7 of the application form:

- a) List your practical strengths (instruments and/or voice) in order of ability and give a clear indication of which ONE you will audition with.
- b) Describe your experience and/or training in music to date.
- c) What do you think the most important qualities are to succeed as a professional musician? Give reasons to support your answers.
- d) Tell us about a composer or songwriter that you admire and why, using musical vocabulary as appropriate.



Post 16 Course Information Music

What will I Study?

Studying for the **UAL, Level 3, Extended Diploma in Music Performance & Production** will provide you with a range of practical skills, knowledge and training to support your aspirations for a career in the music industry. It is **equivalent to three A levels**. The course includes elements of performance techniques, popular music studies, songwriting, recording and music theory. In addition to this, we offer a range of performances throughout the year and our students benefit from regular workshops and visits from established industry professionals.

How do I Apply?

To apply for entry into Year 12, please answer the following questions in Section 7 of the application form:

- a) (i) List your practical strengths (instruments and/or voice) in order of ability and give a clear indication of which ONE you will audition with.
- and/or
- (ii) Give a detailed summary of your experience and/or training in music technology, including any software that you are familiar with.
- b) Describe your experience and/or training in music to date. This could include performances, composition work, recording sessions or anything else that you consider relevant.
- c) What do you think the most important qualities are to succeed as a professional musician? Give reasons to support your answers. In addition, provide at least two examples of occasions on which you have demonstrated these qualities in your own work or study.
- d) Pick an important event in the history of popular music and explain its significance.

Musical Theatre

PERFORMING ARTS COURSE



Course Overview

Whether you join this lively department at aged 14 or 16 you will spend your time improving your technique in singing, dancing and acting skills through hard work and discipline. If you are a versatile and open minded performer then you will fit right in to this rigorous and vibrant course.

Student Experience

You will explore a wide range of performing arts work and develop as both an artist and as a person. The course is designed to give equal focus to acting, singing and dance and the development of skills and knowledge in these performance disciplines. There are a variety of performance opportunities across the course so you can put technique into practise. These include devising, working in the community and public performances, all produced to the highest technical standard in the School's theatres and beyond. Recent productions include: *Crazy For You*, *Pippin*, *Hair*, *Once on this Island* and *The 25th Annual Putnam County Spelling Bee*.

What Qualities do I need?

We recruit students with a wide range of skills and backgrounds, and this creates an environment where our students are encouraged to respect and appreciate differences. The course is very hard work and is likely to be very different to what you have experienced so far in your school life. We will expect you to be open and flexible in your attitude to dealing with these changes. We are looking for potential in all three areas of the performing arts.

Typical Careers:

Performer, Teacher, Producer - TV or Theatre

Key Stage 4 Course Information Musical Theatre

What will I Study?

You will study for a **BTEC Level 2 First Certificate in Performing Arts (Musical Theatre)**, which is **equivalent to two GCSEs**. On the course you will explore a variety of performance styles, with an equal focus on singing, dancing and acting. By the end of the course you will have developed practical and theoretical performance skills that will put you in good stead to continue your study of musical theatre at a higher level.

How do I Apply?

Please answer the following questions in section 7 of the application form:

- a) Why do you feel you are suited to studying Musical Theatre?
- b) What do you think you will learn about yourself by studying Musical Theatre?
- c) Which musical would you most like to be in? Which one would you least like to be in? Explain the reasons for your choices.
- d) What performance have you been involved in that has influenced your decision to study Musical Theatre?

Post 16 Course Information Musical Theatre

What will I Study?

This course focuses on developing your skills and knowledge in all areas of performing arts and lets you explore new performance techniques. With an equal focus on singing, acting and dancing you will get practical opportunities to practise what you've learnt through performance inside and outside of school.

Once you complete your course you will have achieved a **UAL, Level 3, Extended Diploma in Performing Arts** which is **equivalent to three A Levels**.

How do I Apply?

Please answer the following questions in section 7 of the application form:

- a) What do you think are the five most important attributes of a musical theatre performer?
- b) With reference to your future aspirations, what are your expectations of the Musical Theatre course at The BRIT School?
- c) What do you feel you contribute to a team? Give an example of your participation in a team event.
- d) Tell us about a musical theatre composer that you admire. Explain the reasons for your choices.



Theatre

PERFORMING ARTS COURSE



Course Overview

Acting, directing, writing or producing: whatever your passion for theatre, you can learn how to refine your skills on our Theatre course. Not only will you get plenty of opportunities to perform, you will also learn about many of the associated roles and tasks necessary to put on a show. This includes looking at the business side of putting on a play and the marketing behind productions.

You will perform in at least eight productions during your time at the School, and you will also get the opportunity to write your own plays, tour outside of school and work with community groups.

At the end of your course you will be equipped with the practical skills to join the professional world of theatre or further your education in the industry.

Student Experience

There are more than 30 productions per year presented by the Theatre department, so you will have many opportunities to get involved in a performance.

As well as this, you might just get the opportunity to perform at professional venues such as the Trafalgar Studios and New Wimbledon Studio Theatre.

The department's month-long season, Common Ground, showcases a wide genre of plays here at the School. Strawberry Picking, a new writing season, lets you create your own theatre and organise your own performances independently: a creative challenge, but a rewarding one!

What Qualities do I need?

You should have a passion for theatre and the arts and have the commitment and the drive to push yourself. You should also feel comfortable working in a team and be keen to pursue a career in the world of theatre.

Typical Careers:

Actor, Technician, Marketing/PR Manager

Key Stage 4 Course Information Theatre

What will I Study?

If you join us aged 14 you will learn the basics of the performing arts industry from how to market and budget for a show to working backstage and in our box office. Lectures from visiting industry professionals and trips arranged by the department also give you an insight into what working in the world of theatre is really like.

At the end of your studies you will achieve a **BTEC Level 2 First Certificate in Performing Arts (Acting)**, equivalent to two GCSEs.

How do I Apply?

Please answer the following questions on section 7 of the application form:

- a) What do you think your best performance has been so far and why?
- b) What do you think is the most effective piece of theatre you have seen and why?
- c) Why do you think theatre is important?
- d) What do you think you will learn and what do you hope to achieve by studying this course?

Post 16 Course Information Theatre

What will I Study?

You will be studying for a **UAL, Level 3, Extended Diploma in Performing Arts, which is equivalent to three A Levels**.

You will study both the theory and practice of a wide range of theatre styles through workshops and productions. From studying important acting techniques and works from pioneers of the theatre industry, to performing in a Shakespeare play and working with community groups, you will get a well-rounded experience of what you can expect from working in theatre professionally.

How do I Apply?

Please answer the following questions in section 7 of the application form:

- a) What was your most recent role? Please name the play, playwright and character you played if relevant. Do you think you were successful, and why?
- b) What do you think is the most effective piece of theatre you have seen and why?
- c) What actors and actresses do you admire and why?
- d) Why do you think theatre is important? Explain your reasoning through examples of your experience making and seeing theatre performances.



FAQs

Can I apply for more than 1 strand?

Applicants can only apply for one strand.

Can I change strand?

The applicant must start the application process again, sending in a letter stating the new strand choice and enclosing a revised section 7 of the application form (questions relating to strand).

What documents will I need when I apply

KS4 students will need to supply a copy of their Year 8 report, Post 16 students will need a copy of their Year 10 report. At some point during the application process you will be required to supply your passport (to be copied) and a copy of a utility bill which should show the address you were living at the time of application.

I was unsuccessful can I apply for another strand?

Applicants whose application is not successful cannot apply for another strand unless they are specifically recommended by The BRIT School in writing.

Why is there a different application closing date for Post 16 Creative Strands?

This is to allow time for Portfolios to be developed.

When will I know if I have a place?

All decision letters are sent the first week of April. No one will be informed by telephone, email or fax.



I have already started Year 12, can I apply?

Applicants who have already studied at Year 12 can apply to us but they will have to re-sit year 12 again. They cannot be 18 years of age at the start of the course. They should submit a Year 11 report alongside their application.

What if I miss the Open Day?

We only hold two Open Evenings a year. Key Stage 4 and Post 16 students are welcome to attend either evening but obviously the evening will be aimed at that year group. Due to busy timetables and schedules we are unable to facilitate visits at any other time.

What if I cannot make my meeting/audition?

We are only able to try and change interview/audition dates for Public Exams (not mocks) and for hospital appointments. Please supply any supporting documentation of dates you may be unavailable at the point of application.

Do I need to bring anyone to my meeting and if so how many people can I bring?

Due to the high volume of applicants that attend these meetings we ask that you are accompanied only by your parent(s)/carer(s). The parent(s)/carer(s) of Post 16 applicants do not have to attend the meeting if they do not wish to. It is mandatory for KS4 applicants to be accompanied by their parent(s)/carer(s) in order for the interview to take place. Parents can only attend the meeting and NOT the workshop.

I live overseas. Can I apply?

In order to be eligible, an applicant can be accepted from parents residing overseas for a child not yet resident in the UK, as long as (i) the child is a UK National or (ii) the parents intend to relocate and work in the UK. In such circumstances, the school will consider when the child is expected to be resident in the UK and whether the parent's application to enter the UK has been or will be successful. In order that places offered are not wasted because they cannot be taken up, the school will not make an offer to any student resident overseas unless they have a right of residence in the UK or if it is clear beyond reasonable doubt that parent's application to enter and stay in the UK will be successful. We require a copy of your EU identity card or other proof of their right to reside in the UK (for example British/EU Passport). **We will not accept Key Stage 4 students if their parents intend to remain abroad.**

I live out of the catchment area. Will I get in?

Out of area places are very restricted; we can take up to 10% of students outside the catchment area. Applicants from outside the catchment area need to show unusual merit throughout each stage of the application process.

What proof is required to show I am in the catchment area?

You will be asked to supply proof of your address at some point in the application procedure (usually on enrolment day). This can take the form of a utility bill, tenancy agreement etc; the proof supplied cannot be more than three months old. We do not accept mobile phone bills. The bill should reflect the address on your application form. **Please note if you are unable to supply this information it could result in your place being withdrawn.**

Do I have to pay to attend The BRIT School?

There is no charge to attend The BRIT School, although we do ask for a contribution from each student attending the school when they start.

Do you offer accommodation locally?

We do have a list of local residents who offer rooms to be let, but parents must take responsibility for the accommodation being satisfactory and make sure that the day-to-day support for the student is in place. This applies to Post16 students only. **Please note The BRIT School do not vet these landlords**





Selhurst, Norwood Junction and East & West Croydon stations (change at East or West Croydon for Selhurst Station).

75 & 157 available from Norwood Junction,

www.tfl.gov.uk
www.nationalrail.co.uk

Admissions Policy & Procedure

1) Policy

1A) Admission: practical requirements

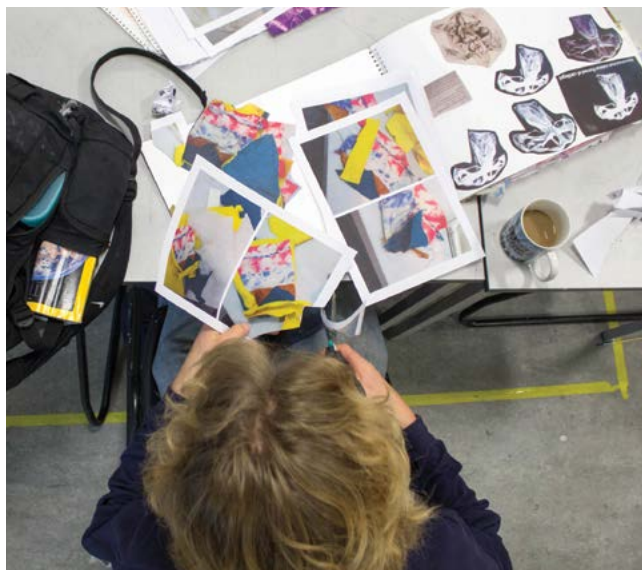
- i) Age (all ages are as at 1 September in the year admitted): Students are admitted at:
 - 14 years of age for Year 10/ Key Stage 4 (KS4) (after Key Stage 3 (KS3))
 - 16 years of age for Year 12/Post 16 courses (after KS4/GCSE)
 - Applicants who are younger than this or who are two or more years older cannot be considered. Applicants who are no more than one year older than this (ie 15 years of age for KS4 or 17 years of age for Post 16) may apply, and should make clear in their application why they are applying out of their expected age group.
 - We do not admit students into Years 11 or 13 or mid-year into any year group.
- ii) Numbers: Allocation of places:
 - Year 10: approximately 200 students - proceeding to Year 11
 - Year 12: approximately 460 students - proceeding to Year 13
 - Availability of places for Year 12: places for applicants from other schools will be dependent on the number of BRIT School Year 11 students admitted to remain for Post 16 study
- iii) Catchment Area:

The catchment area for The BRIT School is available on our website and referred to on page 29.

The School also has a dispensation to give special consideration to applicants of unusual merit from outside the catchment area, subject to restricted numbers, providing that they meet the admission criteria 1B) and follow the general guidelines for accommodation (see section 3)

1B) Admission criteria

- i) The School seeks to admit students who:
 - aim for a life in the world of arts, entertainment and communication or related fields
 - demonstrate (with evidence) a commitment to the performing, visual or digital arts and their associated technologies, either in performance itself or in associated activities
 - demonstrate, during the application procedure, a



real determination to study, practise and succeed and that they have the drive for the demanding schedule, details of which are set out in each departmental section

- demonstrate to the teachers they meet or work with during the application procedure that they would benefit from the education The BRIT School offers. The staff they meet will be assessing:
 - the capacity to acquire the necessary skills and to continue to improve;
 - an understanding of the career and further education choices towards which joining the School will lead them;
 - the relevance of the course to their future career plans;
 - a passion for the art form applied for;
 - relevant current and past activities, including in school;
 - levels of concentration and determination.
- if applying for KS4 can show that they are working with commitment in KS3, and if applying for Post 16 courses, can show that they are working with commitment in KS4
- if applying for KS4, are considering a four year commitment to study

NB Passage from KS4 to Post 16 is not automatic.

- ii) Equal Opportunities:

The School is committed to equal opportunities and

admits students across the full spectrum of academic abilities. The aim is that the School should broadly reflect the community of Greater London. All students have equal access to the curriculum and there is a learning support programme for students with additional learning needs.

2) Procedures

2A) What the applicant must do

i) Prospectus and Application Form

Students or parents/guardians may obtain a prospectus and application form in any of the following ways:

- by reading and downloading via our website, www.brit.croydon.sch.uk. Our preferred method of application is via the online application form. Applications which are not made online must be posted not emailed or faxed.
- by attending a BRIT School Open Evening (See page 5)
- by phone, written request or by visiting the School
- from careers conventions in their school or neighbouring schools

NOTE: We strongly recommend visiting the School during an Open Evening before applying. This will enable parents and applicants to understand the way in which the School works.

ii) Specialism

- Applicants must apply for a specific course. All further arrangements in relation to an application will then be based on this initial choice.



- Should a student wish to change her/his specialism course, the student must start the application procedure again, sending in a letter stating the new specialism choice and enclosing a revised section 7 of the application form. This application is treated as a new application so please ensure that this is received before the deadline date.
- Applicants whose applications are not successful at any stage may not apply for a different course unless specifically recommended by the School in writing.

iii) Returning the Form

We encourage applicants to apply online. The online application form will be available from 1st September. Application forms are available with the new prospectus at the beginning of September. Applicants are encouraged to apply well before the deadline dates; this not only helps the administration of the applications procedure, but reduces the possibility of postal delays making your application late. Please note that late applications will be dealt with after all applications made by the published date.

The deadline dates are:

Year Applying For	Course	Closing Date
Year 12 (Post 16) Performing Arts	Community Arts Practice, Dance, Musical Theatre, Music, Theatre	18 Nov 2016
Year 12 (Post 16) Creative Arts	Film & Media Production, Interactive Digital Design, Technical Theatre Arts, Visual Art & Design (We give additional time to these strands in order that portfolios can be prepared)	27 Jan 2017
Year 10 (Key Stage 4)	All courses	3 Jan 2017

Please check these deadline dates carefully; we will not be able to make exceptions if deadlines are missed because the table has not been read correctly.

We recommend that applicants obtain proof of postage when sending an application as the School cannot be held responsible for non-delivery of applications. Date stamped envelopes will not be considered proof of postage as they are often illegible. Please ensure the correct postage is applied.

Admissions Policy & Procedure

- Application forms must be completed in accordance with the instructions on the form and returned to the School.
- Postal applicants must enclose a stamped addressed envelope and this will be returned to acknowledge receipt of the application form. Online applications will receive an automatic email confirmation of receipt.
- When the form is received applicants submitting incomplete applications will be sent a letter/email informing them their application is incomplete and requesting the information that is still required. The application will not be processed until this information is supplied.
- Applicants who do not submit a complete application in time to be processed by the relevant deadline might find that all places in their chosen specialism have been allocated. Experience has shown that this will almost certainly be the case for Dance, Music, Musical Theatre and Theatre. The other courses may have availability after this date.
- If, on receipt of a late application, all places in the chosen specialism have been allocated, or it appears from the number of applications already underway that all places are likely to have been allocated by the time these applications have been assessed, the application will be placed on a waiting list without being assessed. If places become available before the start of the academic year, applicants on the waiting list may be invited to continue the procedure as outlined in 2B) and 2C) overleaf.
- Applicants who have been home tutored and therefore do not have a school report must contact their Local Education Authority for an assessment showing their educational progress.

Without this information the application will not be processed.

- All applications received by the relevant deadline will be dealt with entirely on their merits.

In addition, special consideration can be given to applicants of unusual merit who are out of catchment area up to a maximum of 10% of the intake; Refer to 3i for more information.

2B) Procedure following the school's receipt of the application form

- All complete application forms received on time will be reviewed against the criteria in section 1B(i) and applications which clearly do not fulfil these criteria may be unsuccessful at this stage.
- No applicant with a Statement of Special Educational Need or an Education Health & Care Plan, nor who are Looked After children, will be excluded from the process at this point. This is in recognition that young people in these situations might require additional support in order to present themselves most fully. Having reached the workshop/audition/meeting, where appropriate support will be available, these candidates will be assessed against the published criteria in the same way as other candidates.
- Depending on which specialism has been applied for, students will be invited to participate in workshops, auditions or meetings with at least two members of The BRIT School staff, usually followed by a structured discussion.
- The applicant will be informed of the format at least two weeks before the due date and whether s/he has to prepare anything or bring anything to the session.
- All applicants for a particular specialism will go through the same procedure (e.g. all dance students will have a workshop, all art students a viewing of work and a meeting).
- The session, whether it is workshop, audition or meeting, is intended to be with, and for the benefit of, the applicant. Therefore, parents/guardians are requested not to participate. However, parents/guardians of KS4 applicants are expected to attend the structured discussion which may follow in case practical issues of travel, accommodation and attendance need to be discussed. Parents/guardians of Post 16 applicants are also welcome to attend this structured discussion.
- The cycle of workshops/auditions/meetings will start in January 2017 and then continue up to the end of March 2017. Additional dates may be added after this, depending upon application numbers. KS4 workshops and meetings will take place over a



fixed two day period on Thursday 23 February and Friday 24 February 2017 only. Please note we will be unable to see KS4 applicants at any other time.

- The date given for a workshop/meeting cannot be changed unless it is for a previously arranged hospital appointment or public exam (not mock). Please include any dates and supporting documentation concerning unavailability with your application form.

2C) Procedure following workshop/audition/meeting

After each workshop/audition/meeting, decisions are made by a panel of staff, including those who have met the applicant, with a senior curriculum manager. The decision to offer a place is based on the criteria outlined previously; evidence concerning these criteria will include reports and references from current schools. Where there are two stages to the process on the same day with some applicants not progressing to the second stage, unsuccessful applicants will be informed orally at the time, with a letter of confirmation within 14 days. In some cases there is a gap of a few weeks between stages; applicants will be informed whether they are to proceed to the second stage by letter. All other students will be informed by letter of the outcome as follows:

- an offer of a place, conditional on successful completion of the relevant key stage (see 3 v), OR
- an offer with special medical conditions attached (see 3 v), OR
- a place on the reserve list, OR
- a decision not to offer a place on the course applied for, with a recommendation that the candidate might wish to apply for an alternative course, OR
- a decision not to offer a place

Brief written feedback to assist in understanding the decision can be provided on written request after your application process has been completed. Requests for feedback must be received in writing within 14 days of the decision being communicated to the applicant. As the admissions process may still be ongoing, feedback may take some time although we will make every endeavour to respond to your request within 6 weeks. We are unable to provide feedback if it is your intention to appeal for a second chance.

NB. Applicants will not receive a final decision until early April 2017 except for those who are not progressing to the second stage of a two-stage process, who will have this decision confirmed in writing within 14 days of the first stage. If you have attended a workshop/audition, we politely request you do not contact Student Services



until after this date. Please note: all decisions will be communicated via post only. We will not send any information electronically via fax, email or telephone.

2D) Procedure following an offer

When offer letters are sent, applicants are given a date by which written acceptance of the place offered must be received by the School. If the applicant fails to accept the place by the due date, it will be assumed that s/he has refused the place.

3) Further guidelines

i) Out of area (see Annex A below)

Out of area places are very restricted: the School received 13 out of area applications for each out of area place available at Year 12 last year, with higher proportions in some performing arts subjects. Please note that candidates from outside the catchment area need to show unusual merit to be offered a place; this criterion will be reflected in the decisions made at all stages of the admissions procedure, including the initial assessment of application forms, which would need to demonstrate the candidate's unusual merit.

ii) Out of area (non UK/EEA National)

The School will accept applications from parents residing overseas for a child not yet resident in the UK only if:

(i) the child is an EU National or (ii) it is clear (with evidence) that the parents will be relocating to work in the UK. In such circumstances, the school will consider when the child is expected to be resident in the UK and whether the parent's application to enter the UK has been or will be successful. In order that places

Admissions Policy & Procedure

offered are not wasted because they cannot be taken up, the School will not make an offer to any student resident overseas unless they have a right of residence in the UK or it is clear beyond reasonable doubt (e.g. evidenced by way of confirmation from a sponsoring employer) that the parent's application to enter and stay in the UK will be successful. It is the parent's responsibility to ensure this is the case.

Where school reports are not in English, please provide an English translation in addition to a copy of the original report.

For child welfare reasons we will not accept applications from children under 16 years old whose parents intend to remain abroad.

iii) Issues of Accommodation

The BRIT School is a day school. It is not responsible for the supervision of students outside of school hours. It has a large catchment area and the school day is longer than other schools'. Students should preferably live within approximately one hour's travelling distance from school.

- KS4 students should not move away from home to achieve a one hour travelling time, except when accommodation can be found with close relatives, who must then take on the day-to-day support of the student at the School.
- Post 16 students may live away from home if necessary, but parents must take responsibility for their accommodation being satisfactory, and make sure that the day-to-day support for the student is in place.

iv) Terms

The BRIT School year consists of 5 Terms of approximately 8 weeks, so BRIT School holidays do not always coincide with other institutions'; The BRIT School does not give permission for BRIT School students to take vacations during term time.

v) Offers of Places

- Offers of places at The BRIT School are made during the preceding academic year. Therefore, it is important that the applicant, having been offered a place, does not drop her/his current standards of work and commitment in the school s/he will be leaving to join The BRIT School.
- Offers of places at The BRIT School are contingent on the previous Key Stage having been completed: i.e. in the case of KS4 applicants, KS3 must be completed; in the case of Post 16 applicants (including BRIT School internal applicants) KS4 must be completed.
- If there is doubt as to the student's medical

capacity to undertake a course, an offer may be contingent on the results of a medical assessment.

Conclusion of Further Guidelines

It is essential that the above guidelines are understood and acted upon to enable the student to concentrate on his/her studies. Failure to do so could result in a student not being admitted to the School.

The School's authorised catchment area is all of Greater London EXCEPT: Postal districts CM13 & 14; EN 4 - 8; HA1 - 8; KT8, RM 1 - 7, 11, 12, 14, 15; UB8 - 10; WD2, 3 & 6.

In addition the following postal districts are included: BR6 & 8; CR0, 2, 3, 5, 6; DA1, 2, 4, 5, 9, 10, 14; KT4, 6, 9, 17 - 21; RH1, 2, 6 - 11; SM2, 3 & 7; TN13, 14, 16; E18 & E20.

A full list of inclusive postcodes can be downloaded from www.brit.croydon.sch.uk

In addition, special consideration can be given to applicants of unusual merit who are out of catchment area up to a maximum of 10% of the intake; Refer to 3i for more information.

Admissions Appeals Policy

The objectives of the Admissions Appeals Policy and Procedure are to ensure that:

- a) You can appeal for a second chance
- b) the School's admissions appeals procedures are clear
- c) throughout the process of admissions the proper procedures are followed

Stage 1:

If an applicant appeals against a decision not to be invited for a workshop/audition and meeting, their application form will be reviewed by a member of SLT and another experienced member of staff, who will either confirm the original decision or move the application to the next stage. Appeals must be received in writing within 14 days of the date of the decision letter. We are unable to produce written feedback while the application process is still underway.

If, after the first meeting/audition/workshop, an applicant is not offered a place, or a place with special conditions, or a place on the Reserve list the applicant may write to 'Admissions, Student Services', and can appeal for a second chance. These letters must refer to the admissions criteria 1B and should outline the reasons for the appeal and why they feel they ought to be offered a second chance. This must be received within 14 days of the date of the decision letter. Please note we do not provide feedback on the first meeting/

audition/ workshop, if you wish to appeal. The second chance is designed for situations where the candidate believes that they did not do themselves justice first time (eg due to illness) and firmly believes that they can improve; the School welcomes such appeals. It should be noted that the School rigorously quality-assures its processes so that all panels within each department will be working to the same standards and criteria both on the day of the first meeting/audition/workshop and at any second chance meeting.

We recommend that applicants obtain a proof of postage when sending an appeal letter as The BRIT School cannot be held responsible for non-delivery of appeal letters. Date stamped envelopes will not be considered proof of postage. We will not accept verbal requests for appeals.

Second-chance meeting/audition/workshops are conducted by a teacher from the relevant department and a member of the Senior Leadership Team. During the first and second-chance workshop/ audition/ meeting, the School will use its professional judgement of applicants, based on the criteria laid out in the admissions policy. Please note that candidates from outside the catchment area need to show unusual merit to be offered a place; this criterion will be reflected in the decisions made at all stages of the admissions and appeals procedure. Therefore being out-of-area does not constitute appropriate grounds for appeal. The date given for an appeal workshop/ audition/meeting cannot be changed unless it is for a previously arranged hospital appointment or public exam (not mocks). Please include any dates and supporting documentation that you are not available in your appeals letter. You must be prompt for this meeting as we are unable to reschedule if you miss the allocated time slot.

Stage 2:

If, after the second-chance workshop/audition/ meeting, an applicant is not offered a place or a place with the special conditions referred to in the General Guidelines of the Admission Policy, an appeal may be made. The appeal must be made in writing to the Chair of Governors by sending an appeal letter to arrive at the School within fourteen days of the decision being communicated to the applicant. In the case of KS4 applicants, the parent/ guardian must write the letter. In the case of Post 16 applicants, either the applicant or their parent/ guardian may write the letter. The appeal letter must state clearly the grounds for appeal.

We recommend you obtain proof of postage for all appeals correspondence.

The School will then send a letter from the Chair of Governors acknowledging receipt of the appeal. Appeals will be considered by a panel of three

people, including a chair who is independent of the School, supported by a clerk who is also independent of the School. The appellant and School will both be required to submit evidence by a set date ahead of the meeting, and the panel may restrict the addition of further evidence after this date. The appellant may attend the appeal hearing in person.

The appeal panel will in the first instance determine whether the second chance process was carried out in a fair, consistent and objective way. If they conclude that it was, they will dismiss the appeal and uphold the original decision. If they do not find that the second chance process was carried out in a fair, consistent and objective way, they will need to assess whether sufficient evidence has been presented to them to demonstrate that the candidate is of the required artistic standard. The appeal panel will not introduce its own tests to assess artistic suitability.

After careful consideration the panel will decide either to:

- uphold the original decision or
- uphold the Appeal and admit the candidate to the School.

The decision of the panel is final and will be communicated in writing.



Contributions made by BRIT students and staff

Main photography by: Ollie Dolling, Phoebe Fox, Grace Benita, Seb Emmins, Sam Marino, Daniel Evans, Richard Davenport, Sharon Kilgannon, Alison Pemberton, Kerry Western, Simon Stephens.



Always



SBRIT



**The BRIT School
for Performing Arts
and Technology**

60 The Crescent
Croydon CR0 2HN



020 8665 5242



admin@brit.croydon.sch.uk



www.brit.croydon.sch.uk



www.facebook.com/thebritschool



[@TheBRITSchool](https://twitter.com/TheBRITSchool)